

Product datasheet for **TA384187**

IRE1 (ERN1) Rabbit Polyclonal Antibody

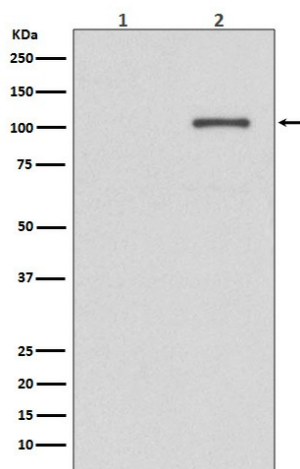
Product data:

Product Type:	Primary Antibodies
Applications:	WB
Recommended Dilution:	WB: 1/500-1/2000
Reactivity:	Human
Host:	Rabbit
Isotype:	IgG
Clonality:	Polyclonal
Immunogen:	A synthesized peptide derived from human Phospho-IRE1 (S724) (Phosphorylated)
Formulation:	Rabbit IgG in phosphate buffered saline , pH 7.4, 150mM NaCl, 0.02% sodium azide and 50% glycerol.
Concentration:	lot specific
Purification:	Affinity Chromatography
Conjugation:	Unconjugated
Storage:	Store at 4°C short term. Aliquot and store at -20°C long term. Avoid freeze/thaw cycles.
Stability:	1 year
Predicted Protein Size:	110kDa
Gene Name:	endoplasmic reticulum to nucleus signaling 1
Database Link:	Entrez Gene 2081 Human O75460
Background:	Swiss-Prot Acc.O75460.Senses unfolded proteins in the lumen of the endoplasmic reticulum via its N-terminal domain which leads to enzyme auto-activation. The active endoribonuclease domain splices XBP1 mRNA to generate a new C-terminus, converting it into a potent unfolded-protein response transcriptional activator and triggering growth arrest and apoptosis.
Synonyms:	FLJ30999; hIRE1p; IRE1; Ire1-alpha; IRE1a; IRE1P; MGC163277; MGC163279



[View online »](#)

Product images:



Western blot analysis of Phospho-IRE1 (S724) in (1) K562 lysates treated with AP; (2) Untreated K562 lysates using Phospho-IRE1 (Ser724) antibody.