

Product datasheet for **TA384186**

ERCC1 Rabbit Monoclonal Antibody [Clone ID: R04-3G3]

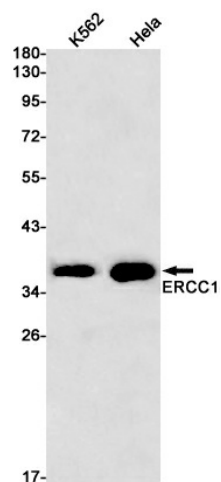
Product data:

Product Type:	Primary Antibodies
Clone Name:	R04-3G3
Applications:	WB
Recommended Dilution:	WB: 1/1000
Reactivity:	Human
Host:	Rabbit
Isotype:	IgG
Clonality:	Monoclonal
Immunogen:	A synthetic peptide of human ERCC1
Formulation:	50mM Tris-Glycine(pH 7.4), 0.15M NaCl, 40% Glycerol, 0.01% Sodium azide and 0.05% BSA
Concentration:	lot specific
Purification:	Affinity Purified
Conjugation:	Unconjugated
Storage:	Store at 4°C short term. Aliquot and store at -20°C long term. Avoid freeze/thaw cycles.
Stability:	1 year
Predicted Protein Size:	Calculated MW: 33 kDa; Observed MW: 39 kDa
Gene Name:	ERCC excision repair 1, endonuclease non-catalytic subunit
Database Link:	Entrez Gene 2067 Human P07992
Background:	Swiss-Prot Acc.P07992.Isoform 1: Non-catalytic component of a structure-specific DNA repair endonuclease responsible for the 5'-incision during DNA repair. Responsible, in conjunction with SLX4, for the first step in the repair of interstrand cross-links (ICL). Participates in the processing of anaphase bridge-generating DNA structures, which consist in incompletely processed DNA lesions arising during S or G2 phase, and can result in cytokinesis failure. Also required for homology-directed repair (HDR) of DNA double-strand breaks, in conjunction with SLX4.RegionsFeature keyPosition(s)Description
Synonyms:	COFS4; UV20



[View online »](#)

Product images:



Western blot detection of ERCC1 in K562, HeLa cell lysates using ERCC1 Rabbit mAb (1:1000 diluted). Predicted band size: 33 kDa. Observed band size: 39 kDa.