

Product datasheet for **TA384185**

ERCC1 Rabbit Polyclonal Antibody

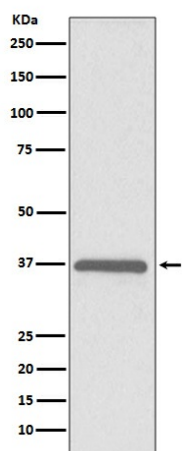
Product data:

Product Type:	Primary Antibodies
Applications:	IF, IHC, WB
Recommended Dilution:	WB: 1/500-1/2000 IHC: 1/50-1/200 ICC/IF: 1/50-1/200
Reactivity:	Human, Mouse
Host:	Rabbit
Isotype:	IgG
Clonality:	Polyclonal
Immunogen:	A synthesized peptide derived from human ERCC1
Formulation:	Rabbit IgG in phosphate buffered saline , pH 7.4, 150mM NaCl, 0.02% sodium azide and 50% glycerol.
Concentration:	lot specific
Purification:	Affinity Chromatography
Conjugation:	Unconjugated
Storage:	Store at 4°C short term. Aliquot and store at -20°C long term. Avoid freeze/thaw cycles.
Stability:	1 year
Predicted Protein Size:	36kDa
Gene Name:	ERCC excision repair 1, endonuclease non-catalytic subunit
Database Link:	Entrez Gene 2067 Human P07992
Background:	Swiss-Prot Acc.P07992.DNA repair systems operate in all living cells to manage a variety of DNA lesions. Nucleotide excision repair (NER) is implemented in cases where bulky helix-distorting lesions occur, such as those brought about by UV and certain chemicals. Research studies have shown that expression of ERCC1 is related to survival rate and response to chemotherapeutic drugs in several human cancers including non-small cell lung cancer (NSCLC).
Synonyms:	COFS4; UV20



[View online »](#)

Product images:



Western blot analysis of ERCC1 in HeLa lysates using ERCC1 antibody.