

Product datasheet for **TA384183**

Eph receptor B1 (EPHB1) Mouse Monoclonal Antibody [Clone ID: 9B4-3F8-1H5]

Product data:

Product Type:	Primary Antibodies
Clone Name:	9B4-3F8-1H5
Applications:	IHC, WB
Recommended Dilution:	WB: 1/500-1/2000 IHC: 1/200-1/1000
Reactivity:	Human
Host:	Mouse
Isotype:	IgG1
Clonality:	Monoclonal
Immunogen:	Purified recombinant fragment of EphB1 (aa19-133) expressed in E. Coli.
Formulation:	Liquid in PBS containing 50% glycerol, 0.5% BSA and 0.03% Proclin 300, pH 7.3.
Concentration:	lot specific
Purification:	Ascitic Fluid
Conjugation:	Unconjugated
Storage:	Store at 4°C short term. Aliquot and store at -20°C long term. Avoid freeze/thaw cycles.
Stability:	1 year
Predicted Protein Size:	110kDa
Gene Name:	EPH receptor B1
Database Link:	Entrez Gene 2047 Human P54762



[View online »](#)

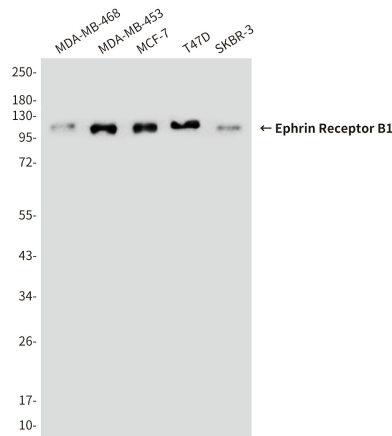
Background:

Swiss-Prot Acc.P54762.EhpB1: EPH receptor B1. It is a receptor for ephrin-B family members. Ephrin receptors and their ligands, the ephrins, mediate numerous developmental processes, particularly in the nervous system. Based on their structures and sequence relationships, ephrins are divided into the ephrin-A (EFNA) class, which are anchored to the membrane by a glycosylphosphatidylinositol linkage, and the ephrin-B (EFNB) class, which are transmembrane proteins. The Eph family of receptors are divided into 2 groups based on the similarity of their extracellular domain sequences and their affinities for binding ephrin-A and ephrin-B ligands. Ephrin receptors make up the largest subgroup of the receptor tyrosine kinase (RTK) family.

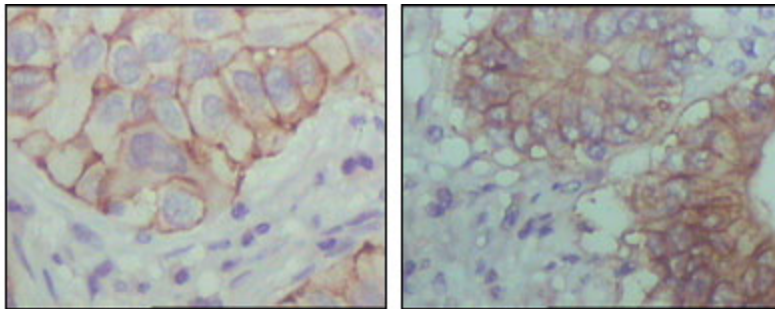
Synonyms:

ELK; EPHT2; FLJ37986; Hek6; NET

Product images:



Western blot analysis of Ephrin Receptor B1 (9B4) in MDA-MB-468 , MDAMB453 , MCF-7 , T47D and SKBR3 lysates using Ephrin Receptor B1 (9B4) antibody.



Immunohistochemical analysis of paraffin-embedded Human tonsils using Ephrin Receptor B1 (9B4) antibody, with DAB staining. High-pressure and temperature Sodium Citrate pH 6.0 was used for antigen retrieval.