

## Product datasheet for **TA384180**

### ENSA Rabbit Monoclonal Antibody [Clone ID: R08-1G6]

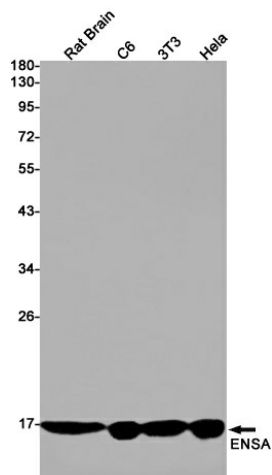
#### Product data:

Product Type:	Primary Antibodies
Clone Name:	R08-1G6
Applications:	WB
Recommended Dilution:	WB: 1/1000-1/5000
Reactivity:	Human, Mouse, Rat
Host:	Rabbit
Isotype:	IgG
Clonality:	Monoclonal
Immunogen:	A synthetic peptide of human ENSA
Formulation:	50mM Tris-Glycine(pH 7.4), 0.15M NaCl, 40% Glycerol, 0.01% Sodium azide and 0.05% BSA
Concentration:	lot specific
Purification:	Affinity Purified
Conjugation:	Unconjugated
Storage:	Store at 4°C short term. Aliquot and store at -20°C long term. Avoid freeze/thaw cycles.
Stability:	1 year
Predicted Protein Size:	Calculated MW: 13 kDa; Observed MW: 15 kDa
Gene Name:	endosulfine alpha
Database Link:	<a href="#">Entrez Gene 2029 Human O43768</a>
Background:	Swiss-Prot Acc.O43768. Protein phosphatase inhibitor that specifically inhibits protein phosphatase 2A (PP2A) during mitosis. When phosphorylated at Ser-67 during mitosis, specifically interacts with PPP2R2D (PR55-delta) and inhibits its activity, leading to inactivation of PP2A, an essential condition to keep cyclin-B1-CDK1 activity high during M phase. Also acts as a stimulator of insulin secretion by interacting with sulfonylurea receptor (ABCC8), thereby preventing sulfonylurea from binding to its receptor and reducing K(ATP) channel currents.
Synonyms:	ARPP-19e; MGC4319; MGC8394; MGC78563



[View online »](#)

## Product images:



Western blot detection of ENSA in Rat Brain,C6,3T3,HeLa cell lysates using ENSA Rabbit mAb(1:1000 diluted).Predicted band size:13kDa.Observed band size:15kDa.