

Product datasheet for **TA384178S**

ENO3 Rabbit Monoclonal Antibody [Clone ID: R07-5B2]

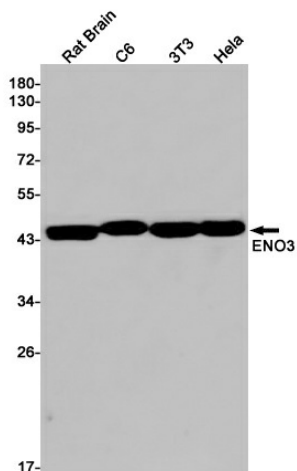
Product data:

Product Type:	Primary Antibodies
Clone Name:	R07-5B2
Applications:	IF, WB
Recommended Dilution:	WB: 1/1000 ICC/IF: 1/100
Reactivity:	Human, Mouse, Rat
Host:	Rabbit
Isotype:	IgG
Clonality:	Monoclonal
Immunogen:	A synthetic peptide of human ENO3
Formulation:	50mM Tris-Glycine(pH 7.4), 0.15M NaCl, 40% Glycerol, 0.01% Sodium azide and 0.05% BSA
Concentration:	lot specific
Purification:	Affinity Purified
Conjugation:	Unconjugated
Storage:	Store at 4°C short term. Aliquot and store at -20°C long term. Avoid freeze/thaw cycles.
Stability:	1 year
Predicted Protein Size:	Calculated MW: 47 kDa; Observed MW: 47 kDa
Gene Name:	enolase 3
Database Link:	Entrez Gene 2027 Human P13929
Background:	Swiss-Prot Acc.P13929. Appears to have a function in striated muscle development and regeneration.
Synonyms:	GSD13; MSE

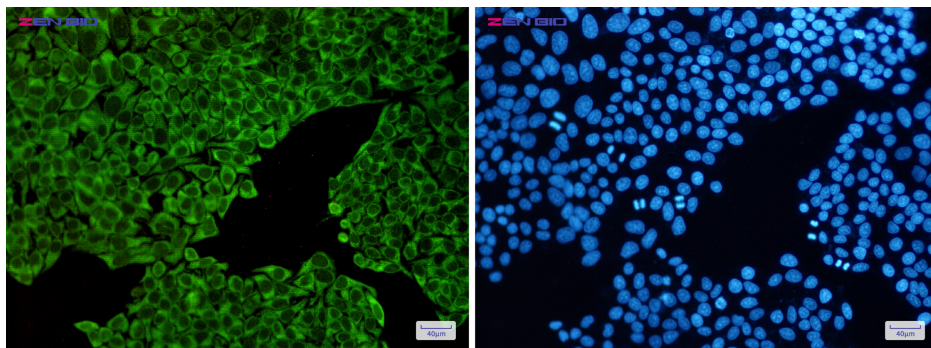


[View online »](#)

Product images:



Western blot detection of ENO3 in Rat Brain, C6, 3T3, HeLa cell lysates using ENO3 Rabbit mAb (1:1000 diluted). Predicted band size: 47 kDa. Observed band size: 47 kDa.



Immunocytochemistry of ENO1/ENO2/ENO3 (green) in HeLa cells using ENO1/ENO2/ENO3 Rabbit mAb at dilution 1/50, and DAPI (blue)