

Product datasheet for **TA384177S**

NSE (ENO2) Rabbit Monoclonal Antibody [Clone ID: R05-5A4]

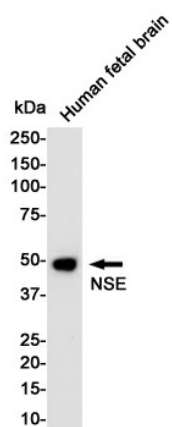
Product data:

Product Type:	Primary Antibodies
Clone Name:	R05-5A4
Applications:	IP, WB
Recommended Dilution:	WB: 1/1000-1/5000 IP: 1/20
Reactivity:	Human, Mouse, Rat
Host:	Rabbit
Isotype:	IgG
Clonality:	Monoclonal
Immunogen:	Recombinant protein of human NSE
Formulation:	50mM Tris-Glycine(pH 7.4), 0.15M NaCl, 40% Glycerol, 0.01% Sodium azide and 0.05% BSA
Concentration:	lot specific
Purification:	Affinity Purified
Conjugation:	Unconjugated
Storage:	Store at 4°C short term. Aliquot and store at -20°C long term. Avoid freeze/thaw cycles.
Stability:	1 year
Predicted Protein Size:	Calculated MW: 47 kDa; Observed MW: 47 kDa
Gene Name:	enolase 2
Database Link:	Entrez Gene 2026 Human P09104
Background:	Swiss-Prot Acc.P09104.Has neurotrophic and neuroprotective properties on a broad spectrum of central nervous system (CNS) neurons. Binds, in a calcium-dependent manner, to cultured neocortical neurons and promotes cell survival .
Synonyms:	NSE



[View online »](#)

Product images:



Western blot analysis of NSE in Human Fetal Brain lysates using NSE antibody.