

Product datasheet for **TA384176M**

NSE (ENO2) Rabbit Polyclonal Antibody

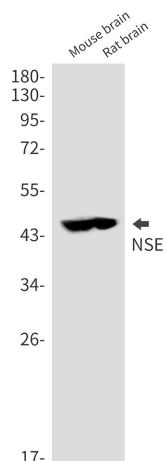
Product data:

Product Type:	Primary Antibodies
Applications:	FC, IF, IHC, WB
Recommended Dilution:	WB: 1/2000 IHC: 1/50 ICC/IF: 1/50 FC: 1/20
Reactivity:	Human, Mouse, Rat
Host:	Rabbit
Isotype:	IgG
Clonality:	Polyclonal
Immunogen:	A synthetic peptide of human NSE
Formulation:	50mM Tris-Glycine(pH 7.4), 0.15M NaCl, 40% Glycerol, 0.01% Sodium azide and 0.05% BSA
Concentration:	lot specific
Purification:	Affinity Purified
Conjugation:	Unconjugated
Storage:	Store at 4°C short term. Aliquot and store at -20°C long term. Avoid freeze/thaw cycles.
Stability:	1 year
Predicted Protein Size:	Calculated MW: 47 kDa; Observed MW: 47 kDa
Gene Name:	enolase 2
Database Link:	Entrez Gene 2026 Human P09104
Background:	Swiss-Prot Acc.P09104.
Synonyms:	NSE

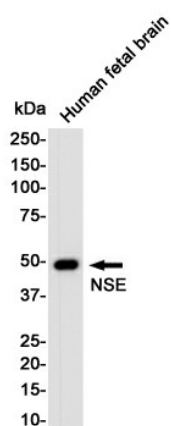


[View online »](#)

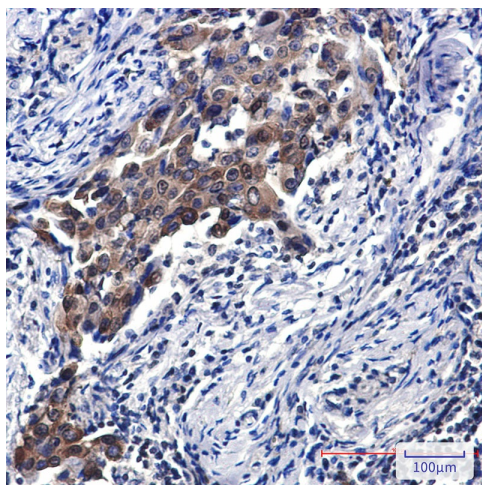
Product images:



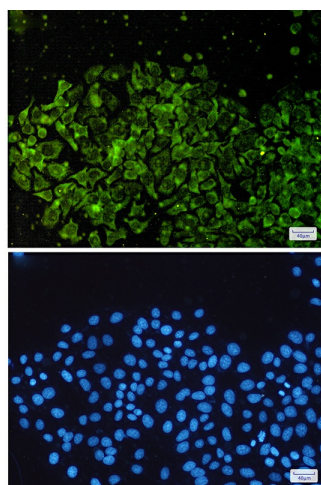
Western blot analysis of NSE in mouse brain, rat brain lysates using NSE antibody.



Western blot analysis of Enolase2/NSE in Human Fetal Brain lysates using Enolase2/NSE antibody.



Immunohistochemistry analysis of paraffin-embedded Human lung cancer using NSE antibody. High-pressure and temperature Sodium Citrate pH 6.0 was used for antigen retrieval.



Immunocytochemistry analysis of NSE (green) in Hela using NSE antibody, and DAPI (blue)