

## Product datasheet for **TA384175S**

### Non Neuronal Enolase (ENO1) Rabbit Monoclonal Antibody [Clone ID: R09-9H5]

#### Product data:

Product Type:	Primary Antibodies
Clone Name:	R09-9H5
Applications:	WB
Recommended Dilution:	WB: 1/1000
Reactivity:	Human, Mouse, Rat
Host:	Rabbit
Isotype:	IgG
Clonality:	Monoclonal
Immunogen:	Recombinant protein of human ENO1
Formulation:	50mM Tris-Glycine(pH 7.4), 0.15M NaCl, 40% Glycerol, 0.01% Sodium azide and 0.05% BSA
Concentration:	lot specific
Purification:	Affinity Purified
Conjugation:	Unconjugated
Storage:	Store at 4°C short term. Aliquot and store at -20°C long term. Avoid freeze/thaw cycles.
Stability:	1 year
Predicted Protein Size:	Calculated MW: 47 kDa; Observed MW: 47 kDa
Gene Name:	enolase 1
Database Link:	<a href="#">Entrez Gene 2023 Human P06733</a>



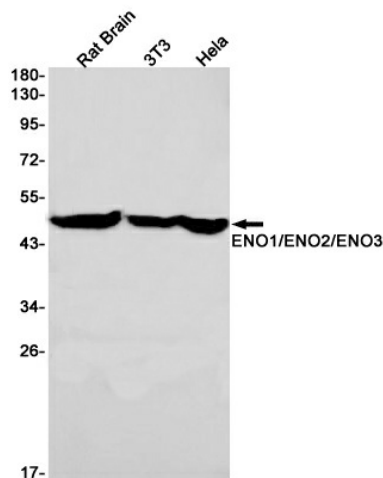
[View online »](#)

**Background:**

Swiss-Prot Acc.P06733.Multifunctional enzyme that, as well as its role in glycolysis, plays a part in various processes such as growth control, hypoxia tolerance and allergic responses. May also function in the intravascular and pericellular fibrinolytic system due to its ability to serve as a receptor and activator of plasminogen on the cell surface of several cell-types such as leukocytes and neurons. Stimulates immunoglobulin production.MBP1 binds to the myc promoter and acts as a transcriptional repressor. May be a tumor suppressor.MiscellaneousUsed as a diagnostic marker for many tumors and, in the heterodimeric form, alpha/gamma, as a marker for hypoxic brain injury after cardiac arrest. Also marker for endometriosis. Antibodies against alpha-enolase are present in sera from patients with cancer-associated retinopathy syndrome (CAR), a progressive blinding disease which occurs in the presence of systemic tumor growth, primarily small-cell carcinoma of the lung and other malignancies. Is identified as an autoantigen in Hashimoto encephalopathy (HE) a rare autoimmune disease associated with Hashimoto thyroiditis (HT). HT is a disorder in which destructive processes overcome the potential capacity of thyroid replacement leading to hypothyroidism.

**Synonyms:**

ENO1L1; MBP-1; MBPB1; MPB-1; MPB1; NNE; PPH; tau-crystallin

**Product images:**

Western blot detection of ENO1/ENO2/ENO3 in Rat Brain,3T3,HeLa cell lysates using ENO1/ENO2/ENO3 Rabbit mAb(1:1000 diluted).Predicted band size:47kDa.Observed band size:47kDa.