

Product datasheet for **TA384174S**

Non Neuronal Enolase (ENO1) Rabbit Monoclonal Antibody [Clone ID: R01-4C8]

Product data:

Product Type:	Primary Antibodies
Clone Name:	R01-4C8
Applications:	IF, IHC, IP, WB
Recommended Dilution:	WB: 1/1000 IHC: 1/500 ICC/IF: 1/100 IP: 1/20
Reactivity:	Human, Mouse, Rat
Host:	Rabbit
Isotype:	IgG
Clonality:	Monoclonal
Immunogen:	A synthetic peptide of human ENO1
Formulation:	50mM Tris-Glycine(pH 7.4), 0.15M NaCl, 40% Glycerol, 0.01% Sodium azide and 0.05% BSA
Concentration:	lot specific
Purification:	Affinity Purified
Conjugation:	Unconjugated
Storage:	Store at 4°C short term. Aliquot and store at -20°C long term. Avoid freeze/thaw cycles.
Stability:	1 year
Predicted Protein Size:	Calculated MW: 47 kDa; Observed MW: 47 kDa
Gene Name:	enolase 1
Database Link:	Entrez Gene 2023 Human P06733



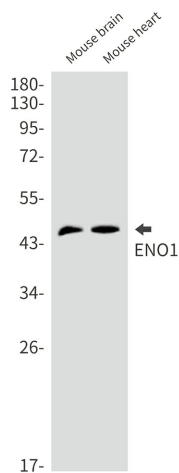
[View online »](#)

Background:

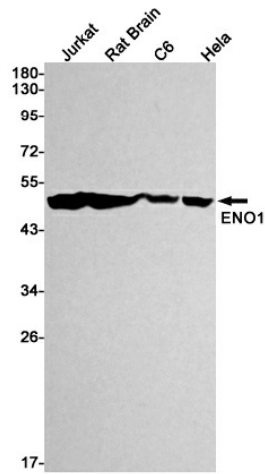
Swiss-Prot Acc.P06733. Multifunctional enzyme that, as well as its role in glycolysis, plays a part in various processes such as growth control, hypoxia tolerance and allergic responses. May also function in the intravascular and pericellular fibrinolytic system due to its ability to serve as a receptor and activator of plasminogen on the cell surface of several cell-types such as leukocytes and neurons. Stimulates immunoglobulin production. MBP1 binds to the myc promoter and acts as a transcriptional repressor. May be a tumor suppressor. Miscellaneous Used as a diagnostic marker for many tumors and, in the heterodimeric form, alpha/gamma, as a marker for hypoxic brain injury after cardiac arrest. Also marker for endometriosis. Antibodies against alpha-enolase are present in sera from patients with cancer-associated retinopathy syndrome (CAR), a progressive blinding disease which occurs in the presence of systemic tumor growth, primarily small-cell carcinoma of the lung and other malignancies. Is identified as an autoantigen in Hashimoto encephalopathy (HE) a rare autoimmune disease associated with Hashimoto thyroiditis (HT). HT is a disorder in which destructive processes overcome the potential capacity of thyroid replacement leading to hypothyroidism.

Synonyms:

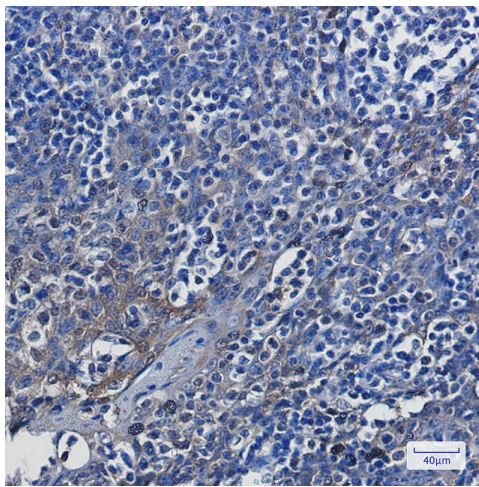
ENO1L1; MBP-1; MBPB1; MPB-1; MPB1; NNE; PPH; tau-crystallin

Product images:

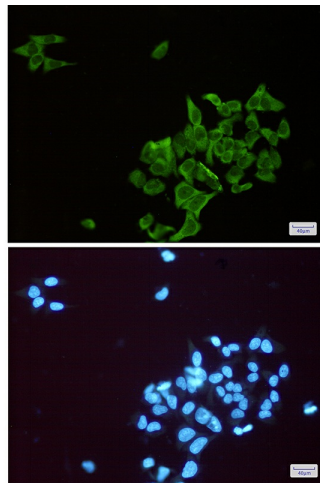
Western blot analysis of ENO1 in mouse brain, mouse heart lysates using ENO1 antibody.



Western blot analysis of ENO1 in Jurkat, rat Brain, C6, HeLa lysates using ENO1 antibody.



Immunohistochemistry analysis of paraffin-embedded Human tonsil using ENO1 antibody. High-pressure and temperature Sodium Citrate pH 6.0 was used for antigen retrieval.



Immunocytochemistry analysis of ENO1 (green) in HeLa using ENO1 antibody, and DAPI (blue)