

## Product datasheet for **TA384172S**

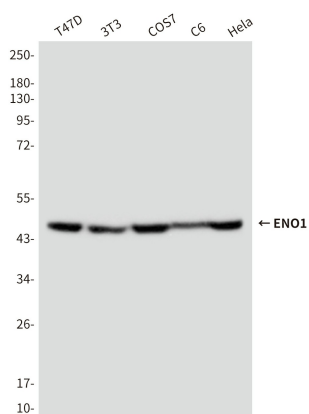
### Non Neuronal Enolase (ENO1) Mouse Monoclonal Antibody [Clone ID: 3F7-B12-D10]

#### Product data:

Product Type:	Primary Antibodies
Clone Name:	3F7-B12-D10
Applications:	WB
Recommended Dilution:	WB: 1/2000
Reactivity:	Human, Mouse, Rat, Monkey
Host:	Mouse
Isotype:	IgG1
Clonality:	Monoclonal
Immunogen:	Purified recombinant human Enolase-1 protein fragments expressed in E.coli.
Formulation:	Liquid in PBS containing 50% glycerol, 0.5% BSA and 0.03% Proclin 300, pH 7.3.
Concentration:	lot specific
Purification:	Affinity Purified
Conjugation:	Unconjugated
Storage:	Store at 4°C short term. Aliquot and store at -20°C long term. Avoid freeze/thaw cycles.
Stability:	1 year
Predicted Protein Size:	47kDa
Gene Name:	enolase 1
Database Link:	<a href="#">Entrez Gene 2023 Human P06733</a>
Background:	Swiss-Prot Acc.P06733.Enolase is an important glycolytic enzyme involved in the interconversion of 2-phosphoglycerate to phosphoenolpyruvate. Mammalian enolase exists as three subunits: enolase-1 ( $\alpha$ -enolase), enolase-2 ( $\gamma$ -enolase) and enolase-3 ( $\beta$ -enolase) that can form both homo- and heterodimers. Expression of the enolase isoforms differs in a tissue specific manner.
Synonyms:	ENO1L1; MBP-1; MBPB1; MPB-1; MPB1; NNE; PPH; tau-crystallin



[View online »](#)

**Product images:**

Western blot analysis of Enolase1 in T47D, 3T3, COS7, C6 and HeLa lysates using Enolase1 antibody.