

Product datasheet for **TA384171**

EMSY Rabbit Polyclonal Antibody

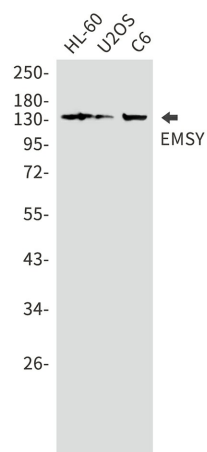
Product data:

Product Type:	Primary Antibodies
Applications:	IP, WB
Recommended Dilution:	WB: 1/1000-1/5000 IP: 1/20
Reactivity:	Human, Rat
Host:	Rabbit
Isotype:	IgG
Clonality:	Polyclonal
Immunogen:	A synthetic peptide of human EMSY
Formulation:	50mM Tris-Glycine(pH 7.4), 0.15M NaCl, 40% Glycerol, 0.01% Sodium azide and 0.05% BSA
Concentration:	lot specific
Purification:	Affinity Purified
Conjugation:	Unconjugated
Storage:	Store at 4°C short term. Aliquot and store at -20°C long term. Avoid freeze/thaw cycles.
Stability:	1 year
Predicted Protein Size:	Calculated MW: 142 kDa; Observed MW: 142 kDa
Gene Name:	EMSY, BRCA2 interacting transcriptional repressor
Database Link:	Entrez Gene 56946 Human Q7Z589
Background:	Swiss-Prot Acc.Q7Z589.



[View online »](#)

Product images:



Western blot analysis of EMSY in HL-60, U2OS, C6 lysates using EMSY antibody.