

## Product datasheet for **TA384170**

### Emerin (EMD) Rabbit Monoclonal Antibody [Clone ID: R02-5J7]

#### Product data:

Product Type:	Primary Antibodies
Clone Name:	R02-5J7
Applications:	IF, IHC, WB
Recommended Dilution:	WB: 1/1000 IHC: 1/20 ICC/IF: 1/50
Reactivity:	Human, Mouse
Host:	Rabbit
Isotype:	IgG
Clonality:	Monoclonal
Immunogen:	A synthetic peptide of human Emerin
Formulation:	50mM Tris-Glycine(pH 7.4), 0.15M NaCl, 40% Glycerol, 0.01% Sodium azide and 0.05% BSA
Concentration:	lot specific
Purification:	Affinity Purified
Conjugation:	Unconjugated
Storage:	Store at 4°C short term. Aliquot and store at -20°C long term. Avoid freeze/thaw cycles.
Stability:	1 year
Predicted Protein Size:	Calculated MW: 29 kDa; Observed MW: 35 kDa
Gene Name:	emerin
Database Link:	<a href="#">Entrez Gene 2010 Human P50402</a>



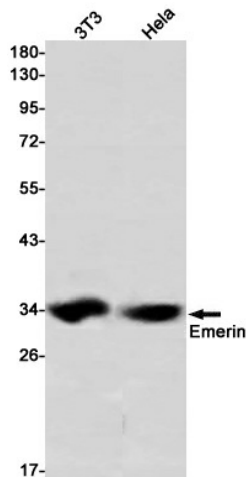
[View online »](#)

**Background:**

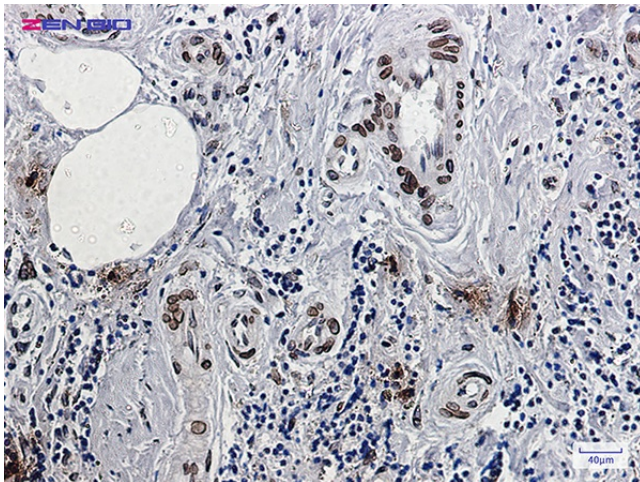
Swiss-Prot Acc.P50402.Stabilizes and promotes the formation of a nuclear actin cortical network. Stimulates actin polymerization in vitro by binding and stabilizing the pointed end of growing filaments. Inhibits beta-catenin activity by preventing its accumulation in the nucleus. Acts by influencing the nuclear accumulation of beta-catenin through a CRM1-dependent export pathway. Links centrosomes to the nuclear envelope via a microtubule association. EMD and BAF are cooperative cofactors of HIV-1 infection. Association of EMD with the viral DNA requires the presence of BAF and viral integrase. The association of viral DNA with chromatin requires the presence of BAF and EMD. Required for proper localization of non-farnesylated prelamin-A/C.

**Synonyms:**

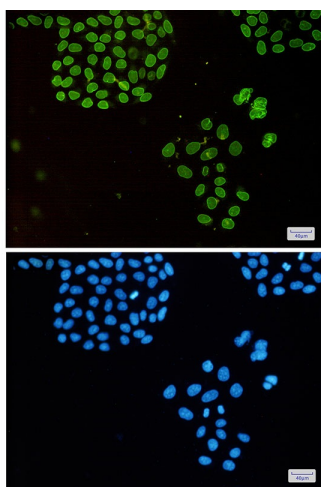
EDMD; emerin; LEMD5; STA

**Product images:**


Western blot analysis of Emerin in 3T3, HeLa lysates using Emerin antibody.



Immunohistochemistry of Emerin in paraffin-embedded Human breast cancer tissue using Emerin Rabbit mAb at dilution 1/5



Immunocytochemistry analysis of Emerin(green) in HeLa using Emerin antibody, and DAPI(blue)