

## Product datasheet for **TA384168S**

### ELMO1 Rabbit Monoclonal Antibody [Clone ID: R03-7J6]

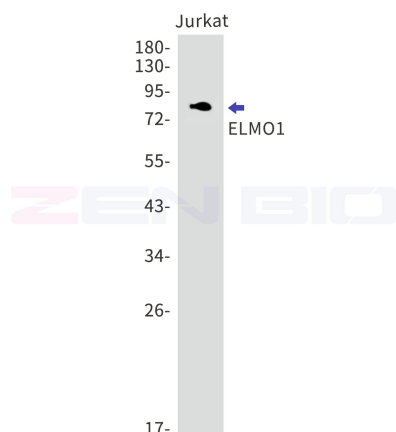
#### Product data:

Product Type:	Primary Antibodies
Clone Name:	R03-7J6
Applications:	IF, IP, WB
Recommended Dilution:	WB: 1/1000 ICC/IF: 1/50 IP: 1/20
Reactivity:	Human, Mouse, Rat
Host:	Rabbit
Isotype:	IgG
Clonality:	Monoclonal
Immunogen:	A synthetic peptide of human ELMO1
Formulation:	50mM Tris-Glycine(pH 7.4), 0.15M NaCl, 40% Glycerol, 0.01% Sodium azide and 0.05% BSA
Concentration:	lot specific
Purification:	Affinity Purified
Conjugation:	Unconjugated
Storage:	Store at 4°C short term. Aliquot and store at -20°C long term. Avoid freeze/thaw cycles.
Stability:	1 year
Predicted Protein Size:	Calculated MW: 84 kDa; Observed MW: 84 kDa
Gene Name:	engulfment and cell motility 1
Database Link:	<a href="#">Entrez Gene 9844 Human Q92556</a>
Background:	Swiss-Prot Acc.Q92556.Involved in cytoskeletal rearrangements required for phagocytosis of apoptotic cells and cell motility. Acts in association with DOCK1 and CRK. Was initially proposed to be required in complex with DOCK1 to activate Rac Rho small GTPases. May enhance the guanine nucleotide exchange factor (GEF) activity of DOCK1.
Synonyms:	CED-12; CED12; ELMO-1; KIAA0281; MGC126406; OTTHUMP00000207056; OTTHUMP00000207060

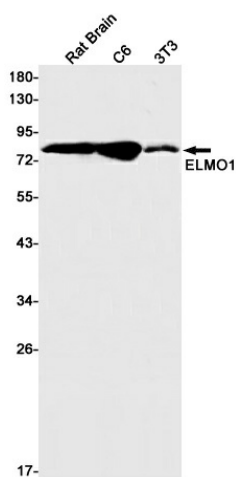


[View online »](#)

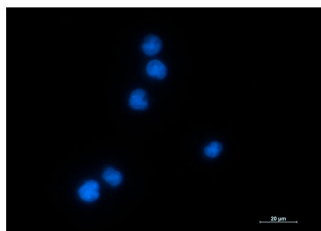
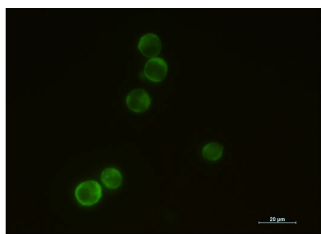
## Product images:



Western blot detection of ELMO1 in Jurkat lysates using ELMO1 antibody. Predicted band size: 84kDa. Observed band size: 84kDa.



Western blot detection of ELMO1 in Rat Brain, C6, 3T3 cell lysates using ELMO1 Rabbit mAb (1:1000 diluted). Predicted band size: 84kDa. Observed band size: 84kDa.



Immunocytochemistry analysis of ELMO1 (green) in Jurkat using ELMO1 antibody, and DAPI (blue).