

Product datasheet for **TA384166S**

ELK1 Rabbit Monoclonal Antibody [Clone ID: R06-5J2]

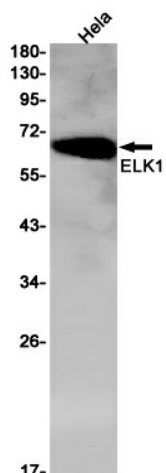
Product data:

Product Type:	Primary Antibodies
Clone Name:	R06-5J2
Applications:	ChIP, IHC, IP, WB
Recommended Dilution:	WB: 1/1000 IHC: 1/20 IP: 1/20 ChIP: 1/20
Reactivity:	Human
Host:	Rabbit
Isotype:	IgG
Clonality:	Monoclonal
Immunogen:	A synthetic peptide of human ELK1
Formulation:	50mM Tris-Glycine(pH 7.4), 0.15M NaCl, 40% Glycerol, 0.01% Sodium azide and 0.05% BSA
Concentration:	lot specific
Purification:	Affinity Purified
Conjugation:	Unconjugated
Storage:	Store at 4°C short term. Aliquot and store at -20°C long term. Avoid freeze/thaw cycles.
Stability:	1 year
Predicted Protein Size:	Calculated MW: 45 kDa; Observed MW: 62 kDa
Gene Name:	ELK1, ETS transcription factor
Database Link:	Entrez Gene 2002 Human P19419
Background:	Swiss-Prot Acc.P19419.Transcription factor that binds to purine-rich DNA sequences. Forms a ternary complex with SRF and the ETS and SRF motifs of the serum response element (SRE) on the promoter region of immediate early genes such as FOS and IER2. Induces target gene transcription upon JNK-signaling pathway stimulation .
Synonyms:	ELK1

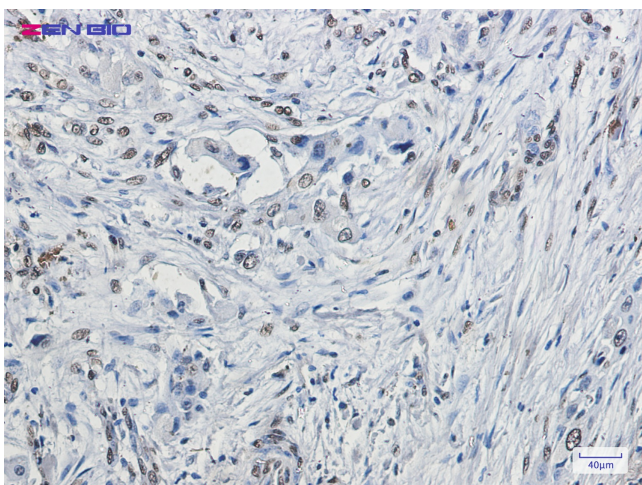


[View online »](#)

Product images:



Western blot analysis of ELK1 in HeLa lysates using ELK1 antibody.



Immunohistochemistry of ELK1 in paraffin-embedded Human lung cancer tissue using ELK1 Rabbit mAb at dilution 1/20