

Product datasheet for **TA384165**

ELAVL2 Rabbit Polyclonal Antibody

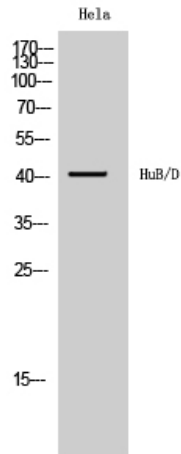
Product data:

Product Type:	Primary Antibodies
Applications:	ELISA, IF, IHC, WB
Recommended Dilution:	WB: 1/500-1/2000 IHC: 1/100-1/300 IF: 1/200-1/1000 ELISA: 1/40000
Reactivity:	Human, Mouse, Rat
Host:	Rabbit
Isotype:	IgG
Clonality:	Polyclonal
Immunogen:	The antiserum was produced against synthesized peptide derived from human ELAV2/4. AA range:61-110
Formulation:	Liquid in PBS containing 50% glycerol, 0.5% BSA and 0.02% sodium azide, pH 7.3.
Concentration:	lot specific
Purification:	Affinity Chromatography
Conjugation:	Unconjugated
Storage:	Store at 4°C short term. Aliquot and store at -20°C long term. Avoid freeze/thaw cycles.
Stability:	1 year
Predicted Protein Size:	Observed MW (kDa):40
Gene Name:	ELAV like neuron-specific RNA binding protein 2
Database Link:	Entrez Gene 1993 Human Q12926
Background:	Swiss-Prot Acc.Q12926/P26378.Eukaryotic translation initiation factor-5 (EIF5) interacts with the 40S initiation complex to promote hydrolysis of bound GTP with concomitant joining of the 60S ribosomal subunit to the 40S initiation complex. The resulting functional 80S ribosomal initiation complex is then active in peptidyl transfer and chain elongations (summary by Si et al. 1996 [PubMed 8663286]).
Synonyms:	HEL-N1; HELN1; HUB; OTTHUMP00000021157

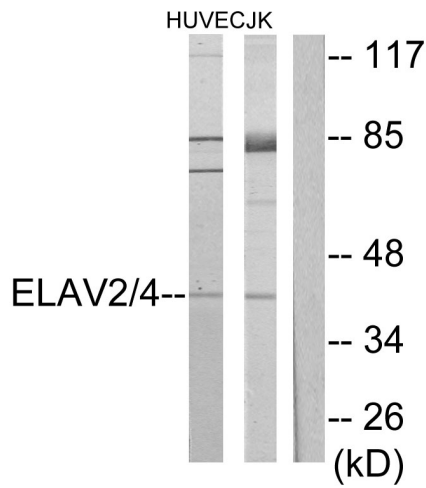


[View online »](#)

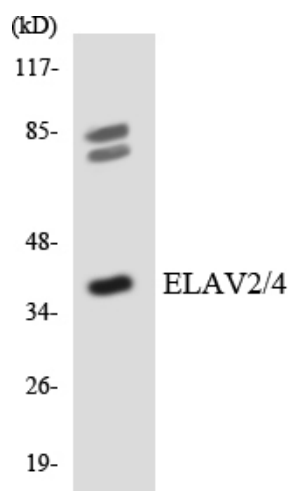
Product images:



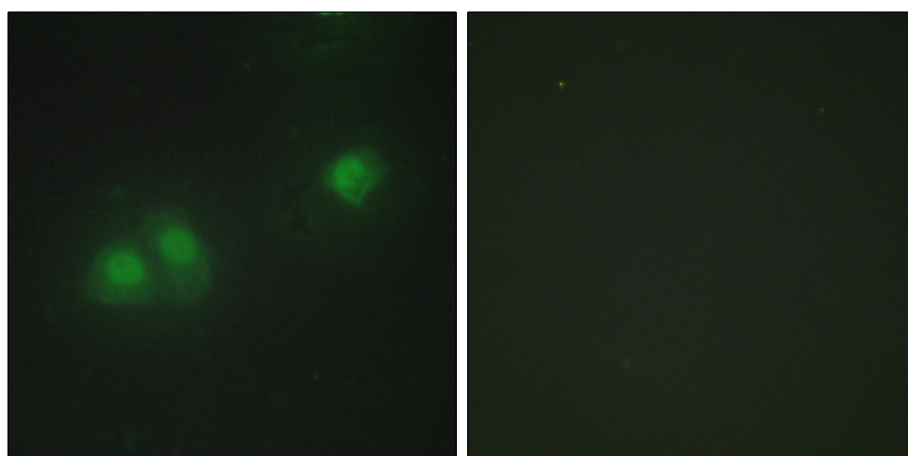
Western blot analysis of HuB/HuD in HeLa lysates using HuB/HuD antibody.



Western blot analysis of HuB/HuD in Jurkat and HUVEC lysates using ELAV2/4 antibody. The lane on the right is blocked with the synthesized peptide.



Western blot analysis of HuB/HuD in 293 lysates using HuB/HuD antibody



Immunofluorescence analysis of HuB/HuD in HepG2 using ELAV2/4 antibody. The picture on the right is blocked using the synthesized peptide.