

## Product datasheet for **TA384164M**

### EIF5A Rabbit Monoclonal Antibody [Clone ID: R09-3F9]

#### Product data:

Product Type:	Primary Antibodies
Clone Name:	R09-3F9
Applications:	IHC, IP, WB
Recommended Dilution:	WB: 1/2000 IHC: 1/20 IP: 1/20
Reactivity:	Human, Mouse, Rat
Host:	Rabbit
Isotype:	IgG
Clonality:	Monoclonal
Immunogen:	A synthetic peptide of human eIF5A
Formulation:	50mM Tris-Glycine(pH 7.4), 0.15M NaCl, 40% Glycerol, 0.01% Sodium azide and 0.05% BSA
Concentration:	lot specific
Purification:	Affinity Purified
Conjugation:	Unconjugated
Storage:	Store at 4°C short term. Aliquot and store at -20°C long term. Avoid freeze/thaw cycles.
Stability:	1 year
Predicted Protein Size:	Calculated MW: 17 kDa; Observed MW: 17 kDa
Gene Name:	eukaryotic translation initiation factor 5A
Database Link:	<a href="#">Entrez Gene 1984 Human P63241</a>

[View online »](#)

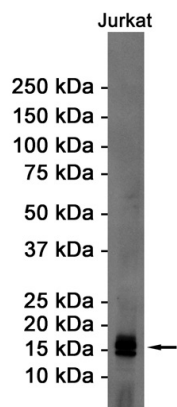
**Background:**

Swiss-Prot Acc.P63241.mRNA-binding protein involved in translation elongation. Has an important function at the level of mRNA turnover, probably acting downstream of decapping. Involved in actin dynamics and cell cycle progression, mRNA decay and probably in a pathway involved in stress response and maintenance of cell wall integrity. With syntenin SDCBP, functions as a regulator of p53/TP53 and p53/TP53-dependent apoptosis. Regulates also TNF-alpha-mediated apoptosis. Mediates effects of polyamines on neuronal process extension and survival. May play an important role in brain development and function, and in skeletal muscle stem cell differentiation. Also described as a cellular cofactor of human T-cell leukemia virus type I (HTLV-1) Rex protein and of human immunodeficiency virus type 1 (HIV-1) Rev protein, essential for mRNA export of retroviral transcripts.

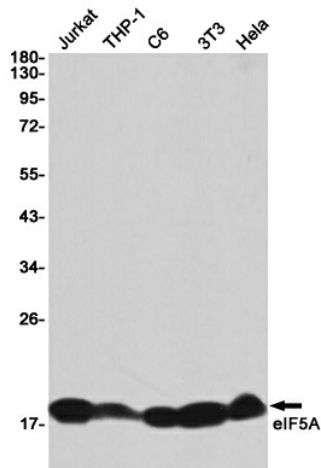
**Synonyms:**

eIF-4D; EIF-5A; eIF-5A-1; eIF-5A1; EIF5A1; eIF5AI; MGC99547; MGC104255

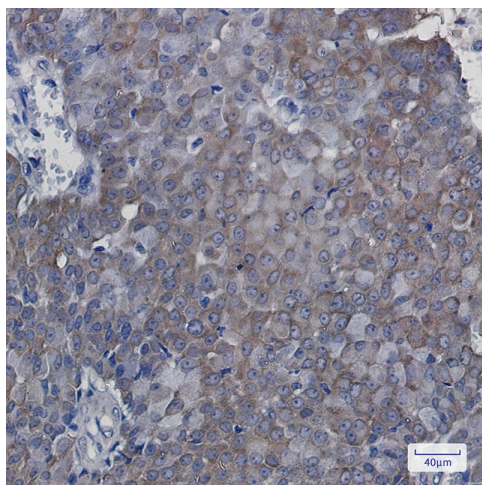
**Product images:**



Western blot analysis of eIF5A in Jurkat lysates using eIF5A antibody.



Western blot analysis of eIF5A in Jurkat, THP-1, C6, 3T3, HeLa lysates using eIF5A antibody.



Immunohistochemistry analysis of paraffin-embedded Human breast cancer using eIF5A antibody. High-pressure and temperature Sodium Citrate pH 6.0 was used for antigen retrieval.