

Product datasheet for TA384163M

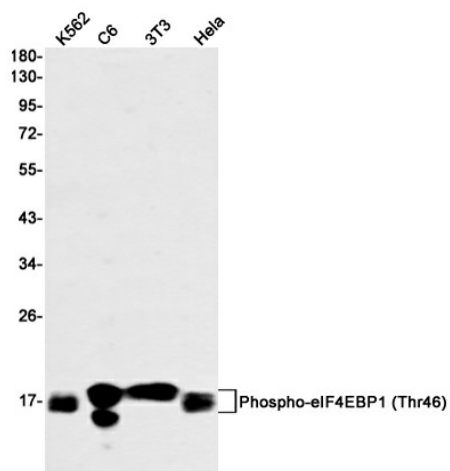
EIF4EBP1 Rabbit Monoclonal Antibody [Clone ID: R03-5C7]

Product data:

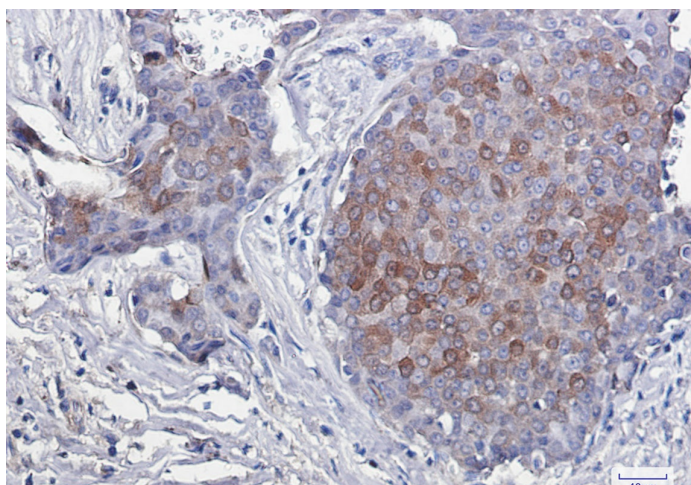
Product Type:	Primary Antibodies
Clone Name:	R03-5C7
Applications:	IHC, IP, WB
Recommended Dilution:	WB: 1/2000 IHC: 1/50 IP: 1/20
Reactivity:	Human, Mouse, Rat
Host:	Rabbit
Isotype:	IgG
Clonality:	Monoclonal
Immunogen:	A synthetic phosphopeptide corresponding to residues surrounding Thr45 of human eIF4EBP1 (Phosphorylated)
Formulation:	50mM Tris-Glycine(pH 7.4), 0.15M NaCl, 40% Glycerol, 0.01% Sodium azide and 0.05% BSA
Concentration:	lot specific
Purification:	Affinity Purified
Conjugation:	Unconjugated
Storage:	Store at 4°C short term. Aliquot and store at -20°C long term. Avoid freeze/thaw cycles.
Stability:	1 year
Predicted Protein Size:	Calculated MW: 13 kDa; Observed MW: 15-20 kDa
Gene Name:	eukaryotic translation initiation factor 4E binding protein 1
Database Link:	Entrez Gene 1978 Human Q13541
Background:	Swiss-Prot Acc.Q13541.
Synonyms:	4E-BP1; 4EBP1; BP-1; MGC4316; PHAS-I


[View online »](#)

Product images:



Western blot analysis of Phospho-eIF4EBP1 (Thr46) in K562, C6, 3T3, HeLa lysates using Phospho-eIF4EBP1 (Thr46) antibody.



Immunohistochemistry analysis of paraffin-embedded Human breast cancer using eIF4EBP1/eIF4EBP2/eIF4EBP3 (Phospho-T45) antibody. High-pressure and temperature Sodium Citrate pH 6.0 was used for antigen retrieval.