

## Product datasheet for **TA384161**

### EIF4EBP1 Rabbit Polyclonal Antibody

#### Product data:

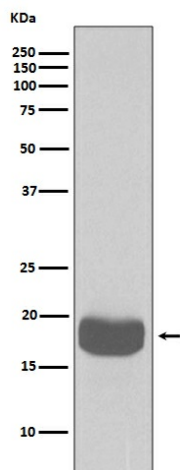
Product Type:	Primary Antibodies
Applications:	FC, IF, IHC, IP, WB
Recommended Dilution:	WB: 1/1000-1/2000 IHC: 1/50-1/200 ICC/IF: 1/50-1/200 IP: 1/50 FC: 1/50
Reactivity:	Human, Mouse, Rat
Host:	Rabbit
Isotype:	IgG
Clonality:	Polyclonal
Immunogen:	A synthesized peptide derived from human eIF4EBP1
Formulation:	Rabbit IgG in phosphate buffered saline , pH 7.4, 150mM NaCl, 0.02% sodium azide and 50% glycerol.
Concentration:	lot specific
Purification:	Affinity Chromatography
Conjugation:	Unconjugated
Storage:	Store at 4°C short term. Aliquot and store at -20°C long term. Avoid freeze/thaw cycles.
Stability:	1 year
Predicted Protein Size:	18kDa
Gene Name:	eukaryotic translation initiation factor 4E binding protein 1
Database Link:	<a href="#">Entrez Gene 1978 Human Q13541</a>
Background:	Swiss-Prot Acc.Q13541.Translation repressor protein 4E-BP1 (also known as PHAS-1) inhibits cap-dependent translation by binding to the translation initiation factor eIF4E. Hyperphosphorylation of 4E-BP1 disrupts this interaction and results in activation of cap-dependent translation. Both the PI3 kinase/Akt pathway and FRAP/mTOR kinase regulate 4E-BP1 activity.



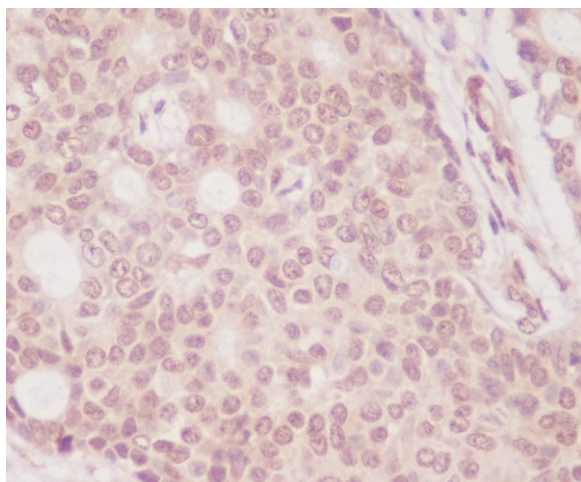
[View online »](#)

Synonyms: 4E-BP1; 4EBP1; BP-1; MGC4316; PHAS-I

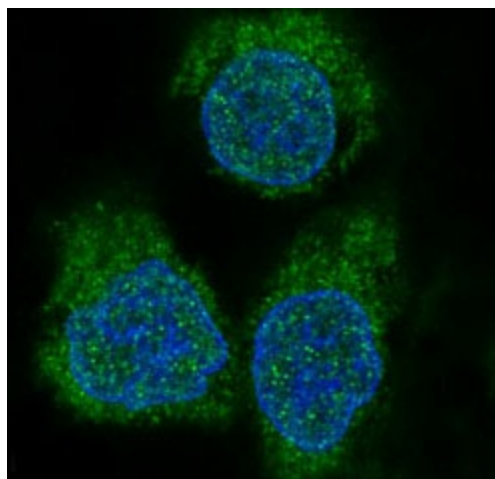
### Product images:



Western blot analysis of eIF4EBP1 in K562 lysates using 4E BP1 antibody.



Immunohistochemistry analysis of paraffin-embedded Human breast carcinoma using eIF4EBP1 antibody. High-pressure and temperature Sodium Citrate pH 6.0 was used for antigen retrieval.



Immunofluorescence analysis of 4E BP1 in HeLa using eIF4EBP1 antibody.