

Product datasheet for **TA384160**

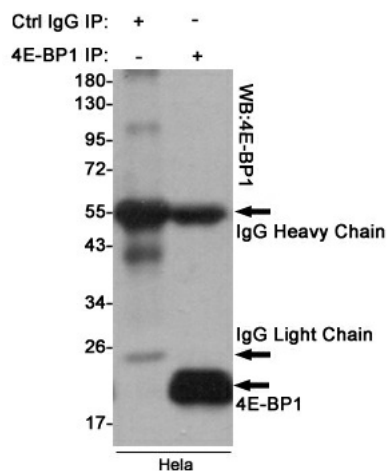
EIF4EBP1 Rabbit Polyclonal Antibody

Product data:

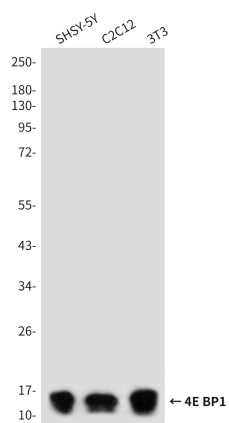
| | |
|-------------------------|---|
| Product Type: | Primary Antibodies |
| Applications: | IP, WB |
| Recommended Dilution: | WB: 1/1000 |
| Reactivity: | Human, Mouse, Rat |
| Host: | Rabbit |
| Isotype: | IgG |
| Clonality: | Polyclonal |
| Immunogen: | Synthetic peptide. |
| Formulation: | Liquid in PBS containing 50% glycerol, 0.5% BSA and 0.03% Proclin 300, pH 7.3. |
| Concentration: | lot specific |
| Purification: | Affinity Purified |
| Conjugation: | Unconjugated |
| Storage: | Store at 4°C short term. Aliquot and store at -20°C long term. Avoid freeze/thaw cycles. |
| Stability: | 1 year |
| Predicted Protein Size: | 15-20kDa |
| Gene Name: | eukaryotic translation initiation factor 4E binding protein 1 |
| Database Link: | Entrez Gene 1978 Human Q13541 |
| Background: | Swiss-Prot Acc.Q13541.4E-BP1 encodes one member of a family of translation repressor proteins. The protein directly interacts with eukaryotic translation initiation factor 4E (eIF4E), which is a limiting component of the multisubunit complex that recruits 40S ribosomal subunits to the 5' end of mRNAs. Interaction of this protein with eIF4E inhibits complex assembly and represses translation. This protein is phosphorylated in response to various signals including UV irradiation and insulin signaling, resulting in its dissociation from eIF4E and activation of mRNA translation. |
| Synonyms: | 4E-BP1; 4EBP1; BP-1; MGC4316; PHAS-I |



[View online »](#)

Product images:


Immunoprecipitation analysis of HeLa cell lysates using 4E-BP1 Rabbit pAb.



Western blot analysis of 4EBP1 in SH-SY5Y, C2C12 and 3T3 lysates using 4EBP1 antibody.