

## Product datasheet for **TA384159S**

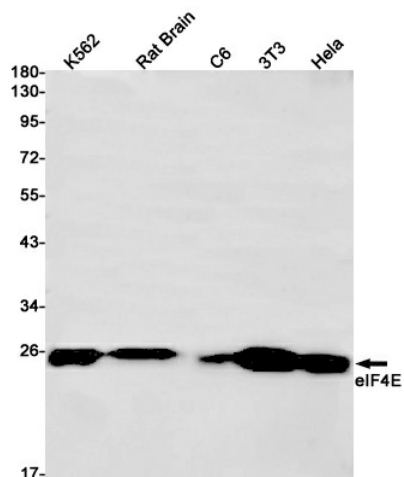
### EIF4E Rabbit Monoclonal Antibody [Clone ID: R04-4H7]

#### Product data:

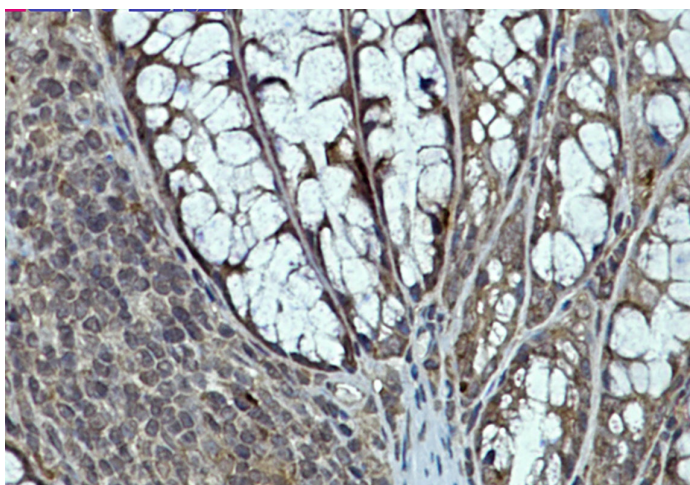
Product Type:	Primary Antibodies
Clone Name:	R04-4H7
Applications:	IHC, IP, WB
Recommended Dilution:	WB: 1/1000 IHC: 1/20 IP: 1/20
Reactivity:	Human, Mouse, Rat
Host:	Rabbit
Isotype:	IgG
Clonality:	Monoclonal
Immunogen:	A synthetic peptide of human eIF4E
Formulation:	50mM Tris-Glycine(pH 7.4), 0.15M NaCl, 40% Glycerol, 0.01% Sodium azide and 0.05% BSA
Concentration:	lot specific
Purification:	Affinity Purified
Conjugation:	Unconjugated
Storage:	Store at 4°C short term. Aliquot and store at -20°C long term. Avoid freeze/thaw cycles.
Stability:	1 year
Predicted Protein Size:	Calculated MW: 25 kDa; Observed MW: 25 kDa
Gene Name:	eukaryotic translation initiation factor 4E
Database Link:	<a href="#">Entrez Gene 1977 Human P06730</a>
Background:	Swiss-Prot Acc.P06730.Recognizes and binds the 7-methylguanosine-containing mRNA cap during an early step in the initiation of protein synthesis and facilitates ribosome binding by inducing the unwinding of the mRNAs secondary structures. Component of the CYFIP1-EIF4E-FMR1 complex which binds to the mRNA cap and mediates translational repression. In the CYFIP1-EIF4E-FMR1 complex this subunit mediates the binding to the mRNA cap.
Synonyms:	CBP; eIF-4E; EIF4E1; EIF4EL1; EIF4F; MGC111573



[View online »](#)

**Product images:**

Western blot detection of eIF4E in K562, Rat Brain, C6, 3T3, HeLa cell lysates using eIF4E Rabbit mAb(1:1000 diluted). Predicted band size: 25kDa. Observed band size: 25kDa.



Immunohistochemistry analysis of paraffin-embedded mouse colon using eIF4E antibody. High-pressure and temperature Sodium Citrate pH 6.0 was used for antigen retrieval.