

Product datasheet for **TA384159**

EIF4E Rabbit Monoclonal Antibody [Clone ID: R04-4H7]

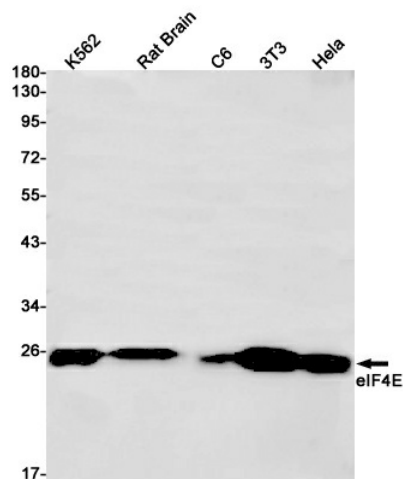
Product data:

| | |
|-------------------------|--|
| Product Type: | Primary Antibodies |
| Clone Name: | R04-4H7 |
| Applications: | IHC, IP, WB |
| Recommended Dilution: | WB: 1/1000 IHC: 1/20 IP: 1/20 |
| Reactivity: | Human, Mouse, Rat |
| Host: | Rabbit |
| Isotype: | IgG |
| Clonality: | Monoclonal |
| Immunogen: | A synthetic peptide of human eIF4E |
| Formulation: | 50mM Tris-Glycine(pH 7.4), 0.15M NaCl, 40% Glycerol, 0.01% Sodium azide and 0.05% BSA |
| Concentration: | lot specific |
| Purification: | Affinity Purified |
| Conjugation: | Unconjugated |
| Storage: | Store at 4°C short term. Aliquot and store at -20°C long term. Avoid freeze/thaw cycles. |
| Stability: | 1 year |
| Predicted Protein Size: | Calculated MW: 25 kDa; Observed MW: 25 kDa |
| Gene Name: | eukaryotic translation initiation factor 4E |
| Database Link: | Entrez Gene 1977 Human P06730 |
| Background: | Swiss-Prot Acc.P06730.Recognizes and binds the 7-methylguanosine-containing mRNA cap during an early step in the initiation of protein synthesis and facilitates ribosome binding by inducing the unwinding of the mRNAs secondary structures. Component of the CYFIP1-EIF4E-FMR1 complex which binds to the mRNA cap and mediates translational repression. In the CYFIP1-EIF4E-FMR1 complex this subunit mediates the binding to the mRNA cap. |
| Synonyms: | CBP; eIF-4E; EIF4E1; EIF4EL1; EIF4F; MGC111573 |

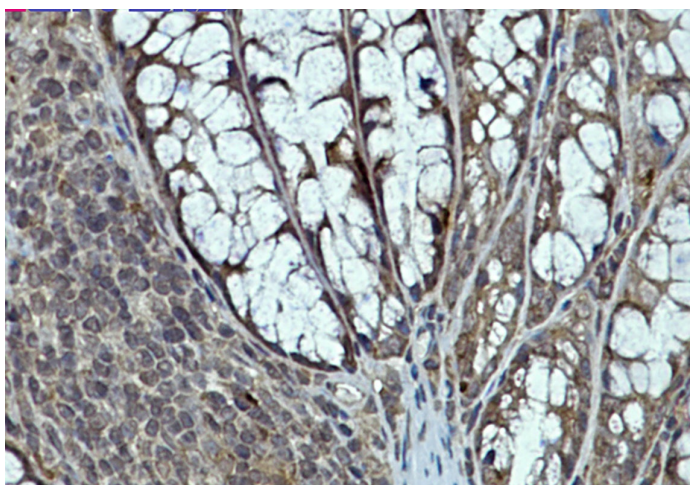


[View online »](#)

Product images:



Western blot detection of eIF4E in K562, Rat Brain, C6, 3T3, HeLa cell lysates using eIF4E Rabbit mAb(1:1000 diluted). Predicted band size: 25kDa. Observed band size: 25kDa.



Immunohistochemistry analysis of paraffin-embedded mouse colon using eIF4E antibody. High-pressure and temperature Sodium Citrate pH 6.0 was used for antigen retrieval.