

## Product datasheet for **TA384158**

### EIF4E Rabbit Monoclonal Antibody [Clone ID: R08-1C5]

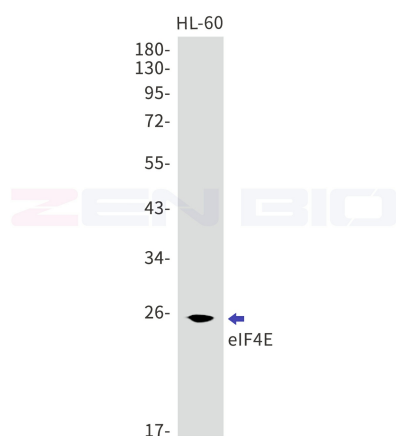
#### Product data:

|                         |  |
|-------------------------|--|
| Product Type:           | Primary Antibodies   |
| Clone Name:             | R08-1C5  |
| Applications:           | IF, IP, WB   |
| Recommended Dilution:   | WB: 1/1000<br>ICC/IF: 1/100<br>IP: 1/20  |
| Reactivity:             | Human, Mouse, Rat  |
| Host:                   | Rabbit   |
| Isotype:                | IgG  |
| Clonality:              | Monoclonal   |
| Immunogen:              | A synthetic peptide of human eIF4E   |
| Formulation:            | 50mM Tris-Glycine(pH 7.4), 0.15M NaCl, 40% Glycerol, 0.01% Sodium azide and 0.05% BSA  |
| Concentration:          | lot specific   |
| Purification:           | Affinity Purified  |
| Conjugation:            | Unconjugated   |
| Storage:                | Store at 4°C short term. Aliquot and store at -20°C long term. Avoid freeze/thaw cycles.   |
| Stability:              | 1 year   |
| Predicted Protein Size: | Calculated MW: 25 kDa; Observed MW: 25 kDa   |
| Gene Name:              | eukaryotic translation initiation factor 4E  |
| Database Link:          | <a href="#">Entrez Gene 1977 Human P06730</a>  |
| Background:             | Swiss-Prot Acc.P06730.Recognizes and binds the 7-methylguanosine-containing mRNA cap during an early step in the initiation of protein synthesis and facilitates ribosome binding by inducing the unwinding of the mRNAs secondary structures. Component of the CYFIP1-EIF4E-FMR1 complex which binds to the mRNA cap and mediates translational repression. In the CYFIP1-EIF4E-FMR1 complex this subunit mediates the binding to the mRNA cap. |
| Synonyms:               | CBP; eIF-4E; EIF4E1; EIF4EL1; EIF4F; MGC111573   |

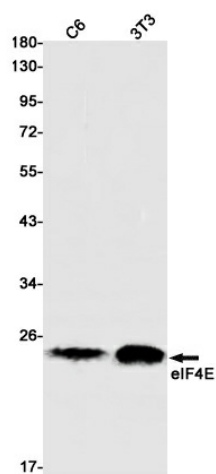


[View online »](#)

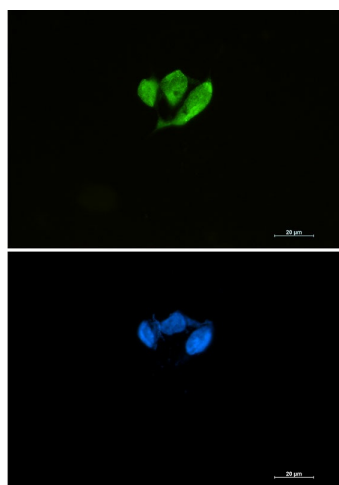
## Product images:



Western blot detection of eIF4E in HL-60 lysates using eIF4E antibody. Predicted band size: 25kDa. Observed band size: 25kDa.



Western blot detection of eIF4E in C6,3T3 cell lysates using eIF4E Rabbit mAb (1:1000 diluted). Predicted band size: 25kDa. Observed band size: 25kDa.



Immunocytochemistry analysis of eIF4E (green) in HCT116 using eIF4E antibody, and DAPI (blue).