

Product datasheet for **TA384157M**

EIF4E Rabbit Monoclonal Antibody [Clone ID: R04-5A4]

Product data:

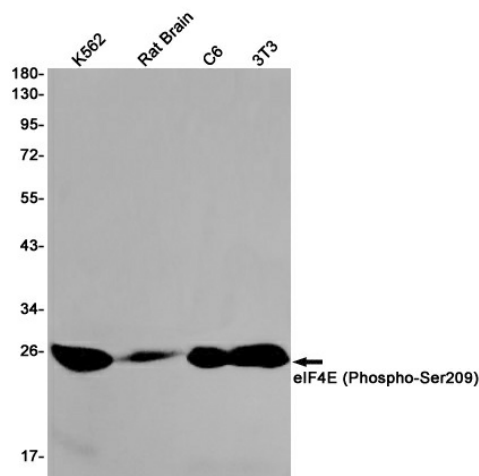
Product Type:	Primary Antibodies
Clone Name:	R04-5A4
Applications:	IF, IHC, IP, WB
Recommended Dilution:	WB: 1/1000-1/10000 IHC: 1/50 ICC/IF: 1/100 IP: 1/20
Reactivity:	Human, Mouse, Rat
Host:	Rabbit
Isotype:	IgG
Clonality:	Monoclonal
Immunogen:	A synthetic phosphopeptide corresponding to residues surrounding Ser209 of human eIF4E (Phosphorylated)
Formulation:	50mM Tris-Glycine(pH 7.4), 0.15M NaCl, 40% Glycerol, 0.01% Sodium azide and 0.05% BSA
Concentration:	lot specific
Purification:	Affinity Purified
Conjugation:	Unconjugated
Storage:	Store at 4°C short term. Aliquot and store at -20°C long term. Avoid freeze/thaw cycles.
Stability:	1 year
Predicted Protein Size:	Calculated MW: 25 kDa; Observed MW: 25 kDa
Gene Name:	eukaryotic translation initiation factor 4E
Database Link:	Entrez Gene 1977 Human P06730
Background:	Swiss-Prot Acc.P06730.Recognizes and binds the 7-methylguanosine-containing mRNA cap during an early step in the initiation of protein synthesis and facilitates ribosome binding by inducing the unwinding of the mRNAs secondary structures. Component of the CYFIP1-EIF4E-FMR1 complex which binds to the mRNA cap and mediates translational repression. In the CYFIP1-EIF4E-FMR1 complex this subunit mediates the binding to the mRNA cap.



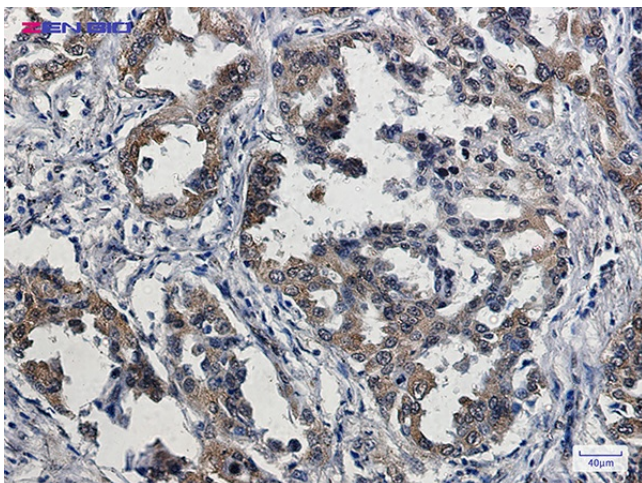
[View online »](#)

Synonyms: CBP; eIF-4E; EIF4E1; EIF4EL1; EIF4F; MGC111573

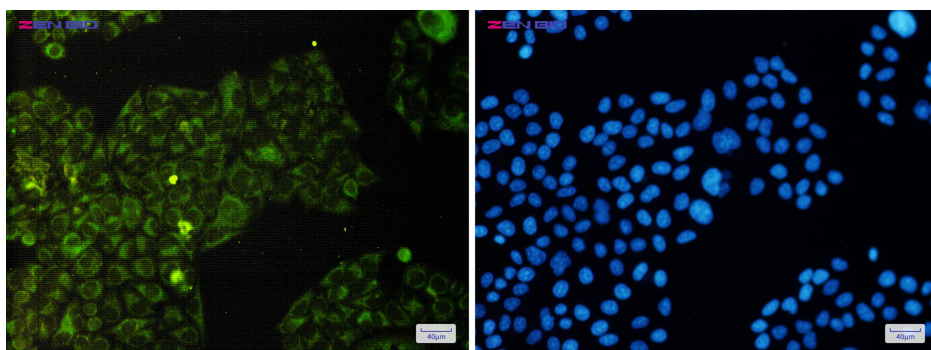
Product images:



Western blot detection of eIF4E (Phospho-Ser209) in K562, Rat Brain, C6, 3T3 cell lysates using eIF4E (Phospho-Ser209) Rabbit mAb (1:1000 diluted). Predicted band size: 25 kDa. Observed band size: 25 kDa.



Immunohistochemistry of Phospho-eIF4E (Ser29) in paraffin-embedded Human lung cancer tissue using Phospho-eIF4E (Ser29) Rabbit mAb at dilution 1/5



Immunocytochemistry of eIF4E (Phospho-Ser209) (green) in HeLa cells using eIF4E (Phospho-Ser209) Rabbit mAb at dilution 1/50, and DAPI (blue)