

Product datasheet for **TA384156**

EIF4E Rabbit Polyclonal Antibody

Product data:

| | |
|-------------------------|--|
| Product Type: | Primary Antibodies |
| Applications: | IF, IHC, IP, WB |
| Recommended Dilution: | WB: 1/1000-1/10000 IHC: 1/50-1/200 ICC/IF: 1/50-1/200 IP: 1/50 |
| Reactivity: | Human, Mouse, Rat |
| Host: | Rabbit |
| Isotype: | IgG |
| Clonality: | Polyclonal |
| Immunogen: | A synthesized peptide derived from human Phospho-eIF4E (S209) (Phosphorylated) |
| Formulation: | Rabbit IgG in phosphate buffered saline , pH 7.4, 150mM NaCl, 0.02% sodium azide and 50% glycerol. |
| Concentration: | lot specific |
| Purification: | Affinity Chromatography |
| Conjugation: | Unconjugated |
| Storage: | Store at 4°C short term. Aliquot and store at -20°C long term. Avoid freeze/thaw cycles. |
| Stability: | 1 year |
| Predicted Protein Size: | 25kDa |
| Gene Name: | eukaryotic translation initiation factor 4E |
| Database Link: | Entrez Gene 1977 Human P06730 |



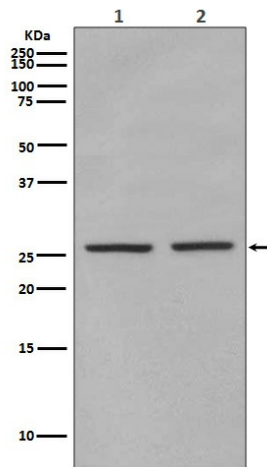
[View online »](#)

Background:

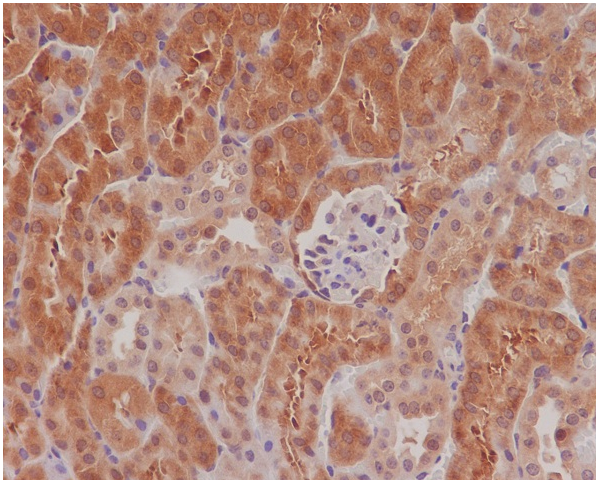
Swiss-Prot Acc.P06730.eIF4E, a protein modulates translation of maternal mRNAs in early embryos before the onset of zygotic transcription. eIF4E also influences the overall rate of translation. eIF4E binds to the 7 methyl GTP cap structure of eukaryotic mRNAs. Phosphorylation of eIF4E on serine 209 regulates the affinity of this protein for the 7 methyl GTP cap and/or RNA. Phosphorylation also enhances the interaction of eIF4E with eIF4G, which form a complex known as eIF4F. eIF4E phosphorylation is correlated with increased translational rate in a number of cell types.

Synonyms:

CBP; eIF-4E; EIF4E1; EIF4EL1; EIF4F; MGC111573

Product images:

Western blot analysis of eIF4E (Phospho-S209) in (1) HEK293 lysates; (2) mouse spleen lysates using Phospho-eIF4E (Ser209) antibody.



Immunohistochemistry analysis of paraffin-embedded mouse kidney using Phospho-eIF4E (S209) antibody. High-pressure and temperature Sodium Citrate pH 6.0 was used for antigen retrieval.