

Product datasheet for **TA384155S**

EIF4A1 Rabbit Monoclonal Antibody [Clone ID: R04-2K6]

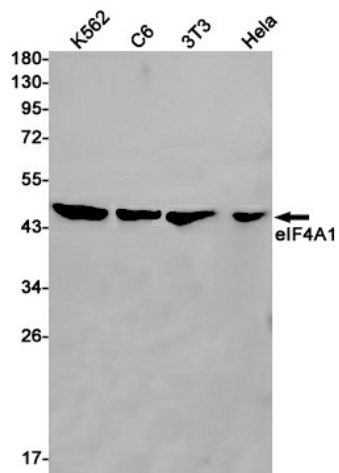
Product data:

Product Type:	Primary Antibodies
Clone Name:	R04-2K6
Applications:	IP, WB
Recommended Dilution:	WB: 1/1000 IP: 1/20
Reactivity:	Human, Mouse, Rat
Host:	Rabbit
Isotype:	IgG
Clonality:	Monoclonal
Immunogen:	A synthetic peptide of human eIF4A1
Formulation:	50mM Tris-Glycine(pH 7.4), 0.15M NaCl, 40% Glycerol, 0.01% Sodium azide and 0.05% BSA
Concentration:	lot specific
Purification:	Affinity Purified
Conjugation:	Unconjugated
Storage:	Store at 4°C short term. Aliquot and store at -20°C long term. Avoid freeze/thaw cycles.
Stability:	1 year
Predicted Protein Size:	Calculated MW: 46 kDa; Observed MW: 46 kDa
Gene Name:	eukaryotic translation initiation factor 4A1
Database Link:	Entrez Gene 1973 Human P60842
Background:	Swiss-Prot Acc.P60842.ATP-dependent RNA helicase which is a subunit of the eIF4F complex involved in cap recognition and is required for mRNA binding to ribosome. In the current model of translation initiation, eIF4A unwinds RNA secondary structures in the 5'-UTR of mRNAs which is necessary to allow efficient binding of the small ribosomal subunit, and subsequent scanning for the initiator codon.
Synonyms:	DDX2A; EIF-4A; eIF-4A-I; EIF4A; eIF4A-I



[View online »](#)

Product images:



Western blot analysis of eIF4A1 in K562, C6, 3T3, HeLa lysates using eIF4A1 antibody.