

## Product datasheet for **TA384154S**

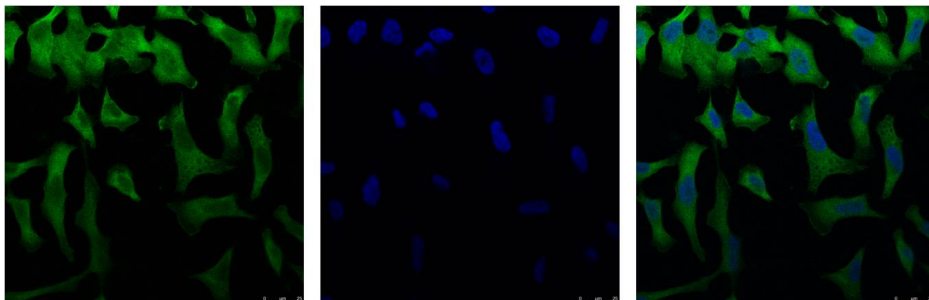
### EIF4A1 Mouse Monoclonal Antibody [Clone ID: 6D7-10D5-7H7]

#### Product data:

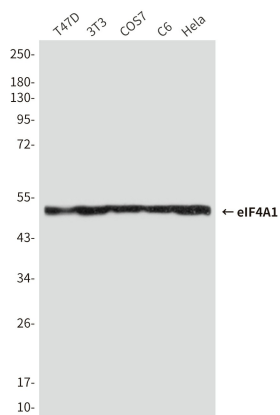
Product Type:	Primary Antibodies
Clone Name:	6D7-10D5-7H7
Applications:	IF, IHC, WB
Recommended Dilution:	WB: 1/1000-3000 ICC: 1/100-200 IHC: 1/50-300
Reactivity:	Human, Mouse, Rat
Host:	Mouse
Isotype:	IgG1
Clonality:	Monoclonal
Immunogen:	Synthetic Peptide of eIF4A1
Formulation:	Liquid in PBS containing 50% glycerol, 0.5% BSA and 0.03% Proclin 300, pH 7.3.
Concentration:	lot specific
Purification:	Affinity Purified
Conjugation:	Unconjugated
Storage:	Store at 4°C short term. Aliquot and store at -20°C long term. Avoid freeze/thaw cycles.
Stability:	1 year
Predicted Protein Size:	Observed MW (kDa):48
Gene Name:	eukaryotic translation initiation factor 4A1
Database Link:	<a href="#">Entrez Gene 1973 Human P60842</a>
Background:	Swiss-Prot Acc.P60842.ATP-dependent RNA helicase which is a subunit of the eIF4F complex involved in cap recognition and is required for mRNA binding to ribosome. In the current model of translation initiation, eIF4A unwinds RNA secondary structures in the 5'-UTR of mRNAs which is necessary to allow efficient binding of the small ribosomal subunit, and subsequent scanning for the initiator codon.
Synonyms:	DDX2A; EIF-4A; eIF-4A-I; EIF4A; eIF4A-I



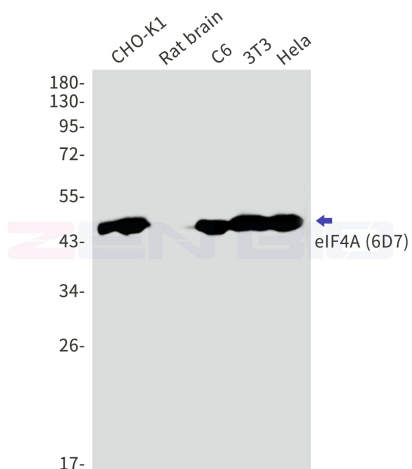
[View online »](#)

**Product images:**


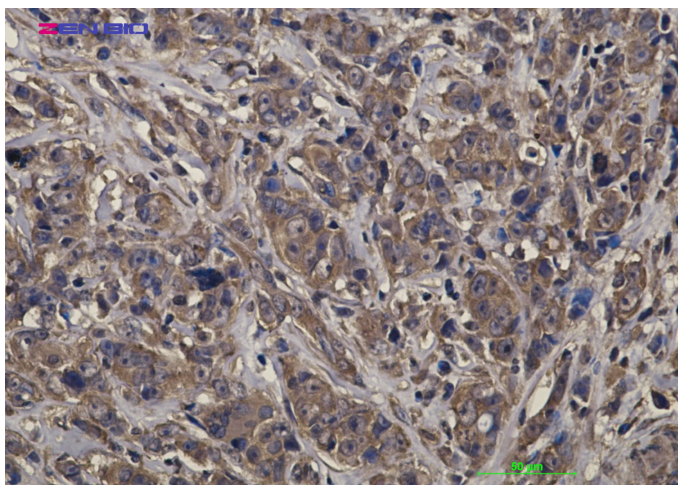
IF analysis of HeLa with (Left) and DAPI (Right) diluted at 1:100



Western blot analysis of eIF4A1 in T47D, 3T3, COS7, C6 and HeLa lysates using eIF4A1 antibody.



Western blot detection of eIF4A (6D7) in CHO-K1, Rat brain, C6, 3T3, HeLa cell lysates using eIF4A (6D7) antibody. Observed band size: 48kDa.



Immunohistochemical of eIF4A1 (6D7) in Human breast cancer tissue using eIF4A1 (6D7) antibody at dilution 1/20