

## Product datasheet for **TA384151M**

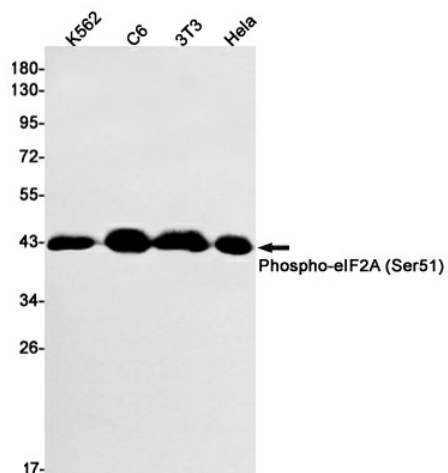
### eIF2 alpha (EIF2S1) Rabbit Monoclonal Antibody [Clone ID: R07-5H9]

#### Product data:

Product Type:	Primary Antibodies
Clone Name:	R07-5H9
Applications:	WB
Recommended Dilution:	WB: 1/1000
Reactivity:	Human, Mouse, Rat
Host:	Rabbit
Isotype:	IgG
Clonality:	Monoclonal
Immunogen:	A synthetic phosphopeptide corresponding to residues surrounding Ser51 of human EIF2S1 (Phosphorylated)
Formulation:	50mM Tris-Glycine(pH 7.4), 0.15M NaCl, 40% Glycerol, 0.01% Sodium azide and 0.05% BSA
Concentration:	lot specific
Purification:	Affinity Purified
Conjugation:	Unconjugated
Storage:	Store at 4°C short term. Aliquot and store at -20°C long term. Avoid freeze/thaw cycles.
Stability:	1 year
Predicted Protein Size:	Calculated MW: 36 kDa; Observed MW: 36 kDa
Gene Name:	eukaryotic translation initiation factor 2 subunit alpha
Database Link:	<a href="#">Entrez Gene 1965 Human P05198</a>
Background:	Swiss-Prot Acc.P05198.
Synonyms:	EIF-2; eIF-2-alpha; EIF-2A; EIF-2alpha; EIF2; EIF2A


[View online »](#)

## Product images:



Western blot analysis of Phospho-eIF2A (Ser51) in K562, C6, 3T3, HeLa lysates using Phospho-eIF2A (Ser51) antibody.