

Product datasheet for **TA384150M**

eIF2 alpha (EIF2S1) Rabbit Polyclonal Antibody

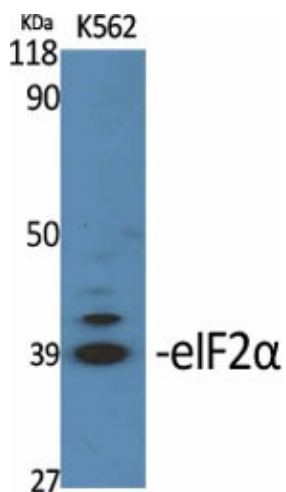
Product data:

Product Type:	Primary Antibodies
Applications:	ELISA, IF, IHC, WB
Recommended Dilution:	IF: 1/50-200 WB: 1/500-1/2000 IHC: 1/100-1/300 ELISA: 1/10000
Reactivity:	Human, Mouse, Rat, Monkey
Host:	Rabbit
Isotype:	IgG
Clonality:	Polyclonal
Immunogen:	The antiserum was produced against synthesized peptide derived from human eIF2 alpha. AA range:21-70
Formulation:	Liquid in PBS containing 50% glycerol, 0.5% BSA and 0.02% sodium azide, pH 7.3.
Concentration:	lot specific
Purification:	Affinity Purified
Conjugation:	Unconjugated
Storage:	Store at 4°C short term. Aliquot and store at -20°C long term. Avoid freeze/thaw cycles.
Stability:	1 year
Predicted Protein Size:	Observed MW (kDa):38
Gene Name:	eukaryotic translation initiation factor 2 subunit alpha
Database Link:	Entrez Gene 1965 Human P05198
Background:	Swiss-Prot Acc.P05198.
Synonyms:	EIF-2; eIF-2-alpha; EIF-2A; EIF-2alpha; EIF2; EIF2A



[View online »](#)

Product images:



Western Blot analysis of various cells using
eIF2u03b1 Polyclonal Antibody