

## Product datasheet for **TA384149**

### GCN2 (EIF2AK4) Rabbit Polyclonal Antibody

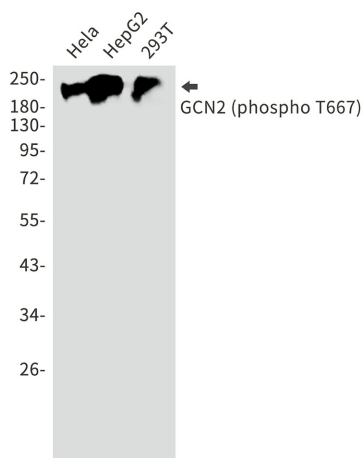
#### Product data:

Product Type:	Primary Antibodies
Applications:	IP, WB
Recommended Dilution:	WB: 1/1000 IP: 1/20
Reactivity:	Human
Host:	Rabbit
Isotype:	IgG
Clonality:	Polyclonal
Immunogen:	A synthetic phosphopeptide corresponding to residues surrounding Thr667 of human GCN2 (Phosphorylated)
Formulation:	50mM Tris-Glycine(pH 7.4), 0.15M NaCl, 40% Glycerol, 0.01% Sodium azide and 0.05% BSA
Concentration:	lot specific
Purification:	Affinity Purified
Conjugation:	Unconjugated
Storage:	Store at 4°C short term. Aliquot and store at -20°C long term. Avoid freeze/thaw cycles.
Stability:	1 year
Predicted Protein Size:	Calculated MW: 187 kDa; Observed MW: 220 kDa
Gene Name:	eukaryotic translation initiation factor 2 alpha kinase 4
Database Link:	<a href="#">Entrez Gene 440275 Human Q9P2K8</a>
Background:	Swiss-Prot Acc.Q9P2K8.
Synonyms:	GCN2; KIAA1338



[View online »](#)

## Product images:



Western blot analysis of Phospho-GCN2 (Thr667) in HeLa, HepG2, 293T lysates using Phospho-GCN2 (Thr667) antibody.