

Product datasheet for **TA384145S**

eIF1A (EIF1AX) Rabbit Monoclonal Antibody [Clone ID: R03-7A9]

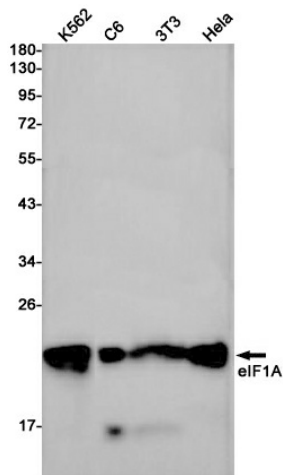
Product data:

Product Type:	Primary Antibodies
Clone Name:	R03-7A9
Applications:	IF, IP, WB
Recommended Dilution:	WB: 1/2000-1/10000 ICC/IF: 1/20 IP: 1/20
Reactivity:	Human, Mouse, Rat
Host:	Rabbit
Isotype:	IgG
Clonality:	Monoclonal
Immunogen:	A synthetic peptide of human eIF1A
Formulation:	50mM Tris-Glycine(pH 7.4), 0.15M NaCl, 40% Glycerol, 0.01% Sodium azide and 0.05% BSA
Concentration:	lot specific
Purification:	Affinity Purified
Conjugation:	Unconjugated
Storage:	Store at 4°C short term. Aliquot and store at -20°C long term. Avoid freeze/thaw cycles.
Stability:	1 year
Predicted Protein Size:	Calculated MW: 17 kDa; Observed MW: 17 kDa
Gene Name:	eukaryotic translation initiation factor 1A, X-linked
Database Link:	Entrez Gene 1964 Human P47813
Background:	Swiss-Prot Acc.P47813.Seems to be required for maximal rate of protein biosynthesis. Enhances ribosome dissociation into subunits and stabilizes the binding of the initiator Met-tRNA(I) to 40 S ribosomal subunits.
Synonyms:	eIF-1A; eIF-4C; EIF1A; EIF1AP1; EIF4C

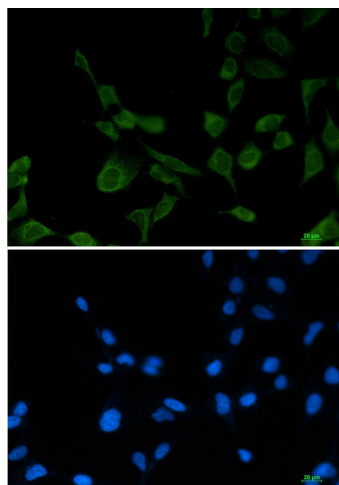


[View online »](#)

Product images:



Western blot detection of eIF1A in K562,C6,3T3,HeLa cell lysates using eIF1A Rabbit mAb(1:1000 diluted).Predicted band size:17kDa.Observed band size:17kDa.



Immunocytochemistry analysis of eIF1A (green) in 293T using eIF1A antibody,and DAPI(blue).