

Product datasheet for **TA384144**

EGR1 Rabbit Polyclonal Antibody

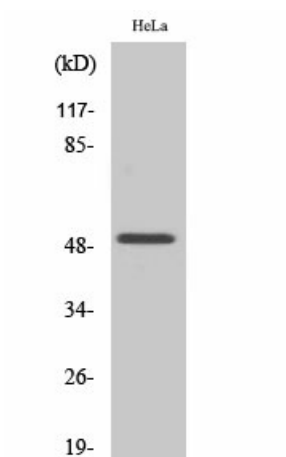
Product data:

| | |
|-------------------------|---|
| Product Type: | Primary Antibodies |
| Applications: | ELISA, IF, IHC, WB |
| Recommended Dilution: | WB: 1/500-1/2000 IHC: 1/100-1/300 IF: 1/200-1/1000 ELISA: 1/20000 |
| Reactivity: | Human, Mouse, Rat |
| Host: | Rabbit |
| Isotype: | IgG |
| Clonality: | Polyclonal |
| Immunogen: | The antiserum was produced against synthesized peptide derived from human EGR1/2. AA range:371-420 |
| Formulation: | Liquid in PBS containing 50% glycerol, 0.5% BSA and 0.02% sodium azide, pH 7.3. |
| Concentration: | lot specific |
| Purification: | Affinity Chromatography |
| Conjugation: | Unconjugated |
| Storage: | Store at 4°C short term. Aliquot and store at -20°C long term. Avoid freeze/thaw cycles. |
| Stability: | 1 year |
| Predicted Protein Size: | Observed MW (kDa):50 |
| Gene Name: | early growth response 1 |
| Database Link: | Entrez Gene 1958 Human P11161 |
| Background: | Swiss-Prot Acc.P18146/P11161.Early growth response 1 encoded by EGR1 belongs to the EGR family of C2H2-type zinc-finger proteins. It is a nuclear protein and functions as a transcriptional regulator. The products of target genes it activates are required for differentiation and mitogenesis. Studies suggest this is a cancer suppressor gene. |
| Synonyms: | AT225; EGR-1; G0S30; KROX-24; NGFI-A; TIS8; ZIF-268; ZNF225 |

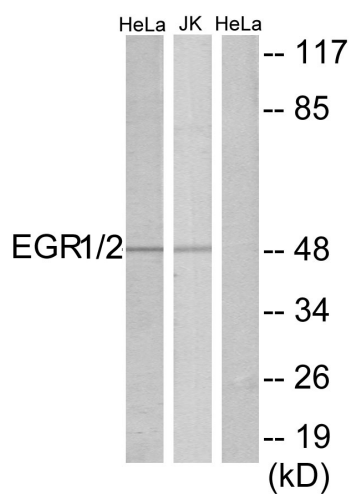


[View online »](#)

Product images:



Western blot analysis of EGR2 in various lysates using Egr2 antibody.



Western blot analysis of EGR2 in HeLa and Jurkat lysates using EGR1/2 antibody. The lane on the right is blocked with the synthesized peptide.