

Product datasheet for **TA384138S**

EGFR Rabbit Monoclonal Antibody [Clone ID: R03-6B1]

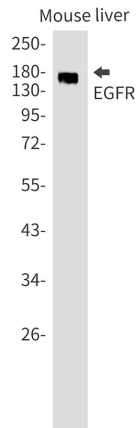
Product data:

| | |
|-------------------------|--|
| Product Type: | Primary Antibodies |
| Clone Name: | R03-6B1 |
| Applications: | IF, IP, WB |
| Recommended Dilution: | WB: 1/2000 ICC/IF: 1/50 IP: 1/20 |
| Reactivity: | Human, Mouse |
| Host: | Rabbit |
| Isotype: | IgG |
| Clonality: | Monoclonal |
| Immunogen: | A synthetic peptide of human EGFR |
| Formulation: | 50mM Tris-Glycine(pH 7.4), 0.15M NaCl, 40% Glycerol, 0.01% Sodium azide and 0.05% BSA |
| Concentration: | lot specific |
| Purification: | Affinity Purified |
| Conjugation: | Unconjugated |
| Storage: | Store at 4°C short term. Aliquot and store at -20°C long term. Avoid freeze/thaw cycles. |
| Stability: | 1 year |
| Predicted Protein Size: | Calculated MW: 134 kDa; Observed MW: 175 kDa |
| Gene Name: | epidermal growth factor receptor |
| Database Link: | Entrez Gene 1956 Human P00533 |
| Background: | Swiss-Prot Acc.P00533. |
| Synonyms: | ERBB; ERBB1; HER1; mENA; PIG61 |

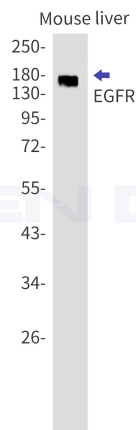


[View online »](#)

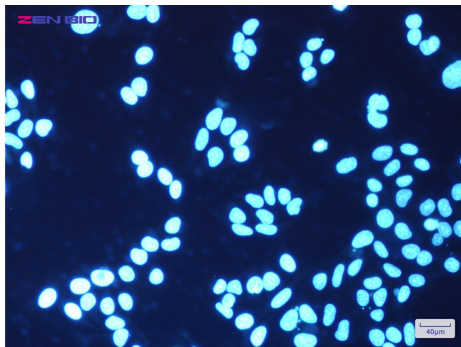
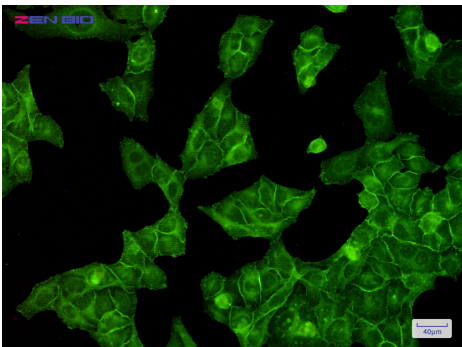
Product images:



Western blot analysis of EGFR in mouse liver lysates using EGFR antibody.



Western blot detection of EGFR in Mouse liver lysates using EGFR antibody. Predicted band size: 134kDa. Observed band size: 175kDa.



Immunocytochemistry of EGFR (green) in HeLa cells using EGFR Rabbit mAb at dilution 1/200, and DAPI (blue)