

Product datasheet for **TA384138**

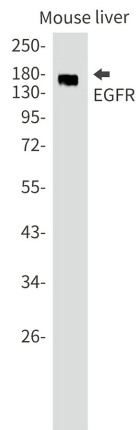
EGFR Rabbit Monoclonal Antibody [Clone ID: R03-6B1]

Product data:

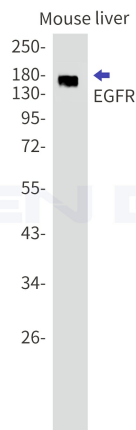
Product Type:	Primary Antibodies
Clone Name:	R03-6B1
Applications:	IF, IP, WB
Recommended Dilution:	WB: 1/2000 ICC/IF: 1/50 IP: 1/20
Reactivity:	Human, Mouse
Host:	Rabbit
Isotype:	IgG
Clonality:	Monoclonal
Immunogen:	A synthetic peptide of human EGFR
Formulation:	50mM Tris-Glycine(pH 7.4), 0.15M NaCl, 40% Glycerol, 0.01% Sodium azide and 0.05% BSA
Concentration:	lot specific
Purification:	Affinity Purified
Conjugation:	Unconjugated
Storage:	Store at 4°C short term. Aliquot and store at -20°C long term. Avoid freeze/thaw cycles.
Stability:	1 year
Predicted Protein Size:	Calculated MW: 134 kDa; Observed MW: 175 kDa
Gene Name:	epidermal growth factor receptor
Database Link:	Entrez Gene 1956 Human P00533
Background:	Swiss-Prot Acc.P00533.
Synonyms:	ERBB; ERBB1; HER1; mENA; PIG61



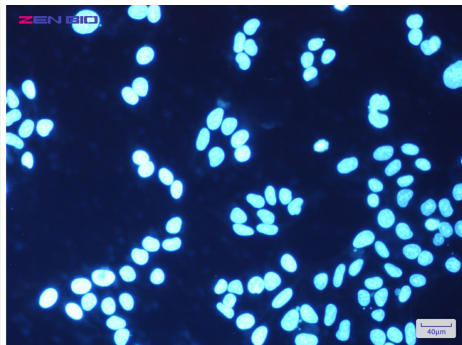
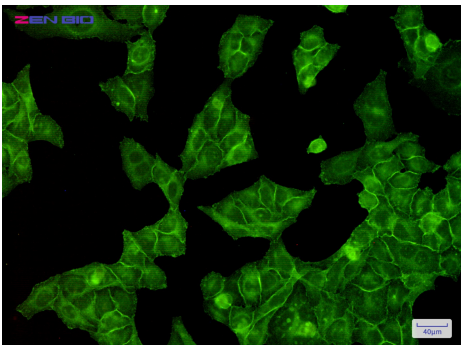
[View online »](#)

Product images:


Western blot analysis of EGFR in mouse liver lysates using EGFR antibody.



Western blot detection of EGFR in Mouse liver lysates using EGFR antibody. Predicted band size: 134kDa. Observed band size: 175kDa.



Immunocytochemistry of EGFR (green) in HeLa cells using EGFR Rabbit mAb at dilution 1/200, and DAPI (blue)