

Product datasheet for **TA384132M**

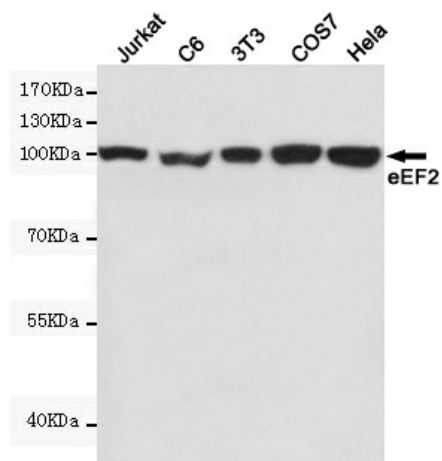
EEF2 Mouse Monoclonal Antibody [Clone ID: 4B3-G7-H5]

Product data:

Product Type:	Primary Antibodies
Clone Name:	4B3-G7-H5
Applications:	IF, WB
Recommended Dilution:	WB: 1/1000 ICC: 1/200
Reactivity:	Human, Mouse, Monkey, Rat
Host:	Mouse
Isotype:	IgG2b
Clonality:	Monoclonal
Immunogen:	Purified recombinant human eEF2 protein fragments expressed in E.coli.
Formulation:	Liquid in PBS containing 50% glycerol, 0.5% BSA and 0.03% Proclin 300, pH 7.3.
Concentration:	lot specific
Purification:	Affinity Purified
Conjugation:	Unconjugated
Storage:	Store at 4°C short term. Aliquot and store at -20°C long term. Avoid freeze/thaw cycles.
Stability:	1 year
Predicted Protein Size:	95kDa
Gene Name:	eukaryotic translation elongation factor 2
Database Link:	Entrez Gene 1938 Human P13639
Background:	Swiss-Prot Acc.P13639.
Synonyms:	EEF-2; EF-2; EF2



[View online »](#)

Product images:

Western blot detection of eEF2 in Jurkat, C6, 3T3, COS7 and HeLa cell lysates using eEF2 mouse mAb (1:5000 diluted). Predicted band size: 95KDa. Observed band size: 95KDa.