

## Product datasheet for **TA384131**

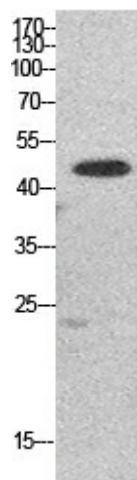
### EEF1A1 Rabbit Polyclonal Antibody

#### Product data:

Product Type:	Primary Antibodies
Applications:	ELISA, WB
Recommended Dilution:	WB: 1/500-1/2000 ELISA: 1/20000
Reactivity:	Human, Mouse, Rat
Host:	Rabbit
Isotype:	IgG
Clonality:	Polyclonal
Immunogen:	Synthesized peptide derived from the N-terminal region of human EF-1 $\alpha$ 1/2.
Formulation:	Liquid in PBS containing 50% glycerol, 0.5% BSA and 0.02% sodium azide, pH 7.3.
Concentration:	lot specific
Purification:	Affinity Purified
Conjugation:	Unconjugated
Storage:	Store at 4°C short term. Aliquot and store at -20°C long term. Avoid freeze/thaw cycles.
Stability:	1 year
Predicted Protein Size:	Observed MW (kDa):50
Gene Name:	eukaryotic translation elongation factor 1 alpha 1
Database Link:	<a href="#">Entrez Gene 1915 Human P68104</a>
Background:	Swiss-Prot Acc.P68104/Q05639/Q5VTE0.
Synonyms:	CCS-3; CCS3; EEF-1; EEF1A; eEF1A-1; EF-1-alpha-1; EF-Tu; EF1A; FLJ25721; GRAF-1EF; HNGC:16303; LENG7; MGC16224; MGC102687; MGC131894; OTTHUMP00000063804; PT11



[View online »](#)

**Product images:**

Western blot analysis of Elongation Factor 1A1/2/P5 in HepG2 lysates using Elongation Factor 1A1/2/P5 antibody.