

Product datasheet for **TA384130S**

EEF1A1 Rabbit Monoclonal Antibody [Clone ID: R05-4K5]

Product data:

Product Type:	Primary Antibodies
Clone Name:	R05-4K5
Applications:	IHC, IP, WB
Recommended Dilution:	WB: 1/1000 IHC: 1/20 IP: 1/20
Reactivity:	Human, Mouse, Rat
Host:	Rabbit
Isotype:	IgG
Clonality:	Monoclonal
Immunogen:	A synthetic peptide of human eEF1A1
Formulation:	50mM Tris-Glycine(pH 7.4), 0.15M NaCl, 40% Glycerol, 0.01% Sodium azide and 0.05% BSA
Concentration:	lot specific
Purification:	Affinity Purified
Conjugation:	Unconjugated
Storage:	Store at 4°C short term. Aliquot and store at -20°C long term. Avoid freeze/thaw cycles.
Stability:	1 year
Predicted Protein Size:	Calculated MW: 50 kDa; Observed MW: 50 kDa
Gene Name:	eukaryotic translation elongation factor 1 alpha 1
Database Link:	Entrez Gene 1915 Human P68104
Background:	Swiss-Prot Acc.P68104.This protein promotes the GTP-dependent binding of aminoacyl-tRNA to the A-site of ribosomes during protein biosynthesis. With PARP1 and TXK, forms a complex that acts as a T helper 1 (Th1) cell-specific transcription factor and binds the promoter of IFN-gamma to directly regulate its transcription, and is thus involved importantly in Th1 cytokine production.

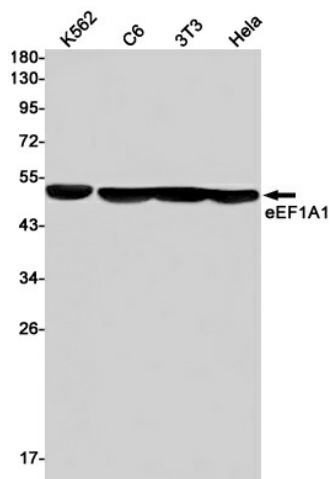


[View online »](#)

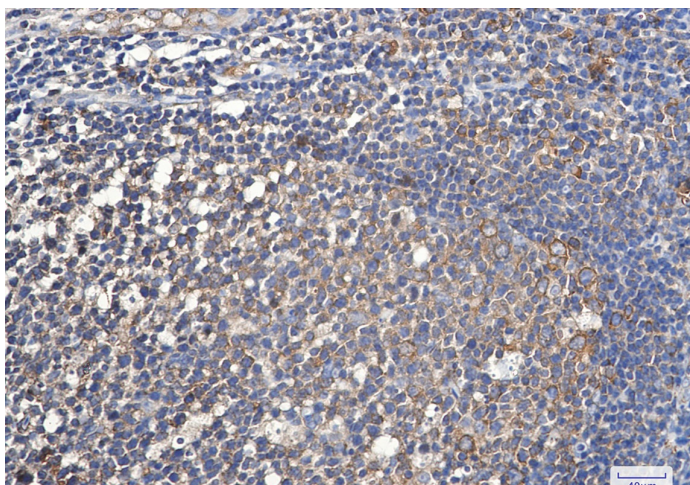
Synonyms:

CCS-3; CCS3; EEF-1; EEF1A; eEF1A-1; EF-1-alpha-1; EF-Tu; EF1A; FLJ25721; GRAF-1EF; HNGC:16303; LENG7; MGC16224; MGC102687; MGC131894; OTTHUMP00000063804; PT11

Product images:



Western blot analysis of eEF1A1 in K562, C6, 3T3, HeLa lysates using Elongation Factor 1A1 antibody.



Immunohistochemistry analysis of paraffin-embedded Human tonsil using eEF1A1 antibody. High-pressure and temperature Sodium Citrate pH 6.0 was used for antigen retrieval.