

Product datasheet for **TA384128**

ECM1 Rabbit Monoclonal Antibody [Clone ID: R07-7E8]

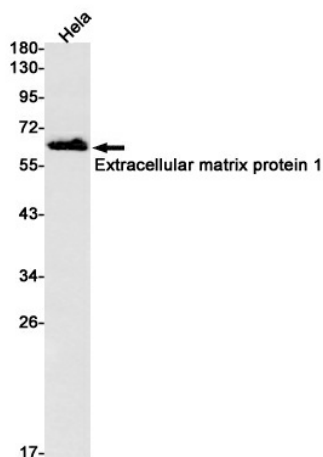
Product data:

Product Type:	Primary Antibodies
Clone Name:	R07-7E8
Applications:	IF, IHC, IP, WB
Recommended Dilution:	WB: 1/1000 IHC: 1/20 ICC/IF: 1/20 IP: 1/20
Reactivity:	Human
Host:	Rabbit
Isotype:	IgG
Clonality:	Monoclonal
Immunogen:	A synthetic peptide of human Extracellular matrix protein 1
Formulation:	50mM Tris-Glycine(pH 7.4), 0.15M NaCl, 40% Glycerol, 0.01% Sodium azide and 0.05% BSA
Concentration:	lot specific
Purification:	Affinity Purified
Conjugation:	Unconjugated
Storage:	Store at 4°C short term. Aliquot and store at -20°C long term. Avoid freeze/thaw cycles.
Stability:	1 year
Predicted Protein Size:	Calculated MW: 61 kDa; Observed MW: 61 kDa
Gene Name:	extracellular matrix protein 1
Database Link:	Entrez Gene 1893 Human Q16610
Background:	Swiss-Prot Acc.Q16610.Involved in endochondral bone formation as negative regulator of bone mineralization. Stimulates the proliferation of endothelial cells and promotes angiogenesis. Inhibits MMP9 proteolytic activity.
Synonyms:	ECM1

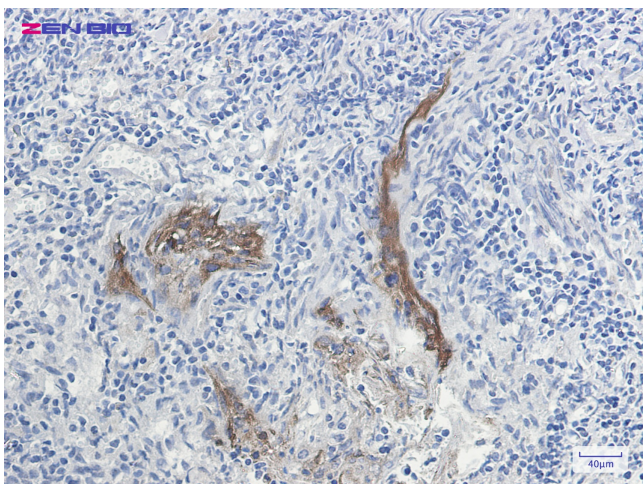


[View online »](#)

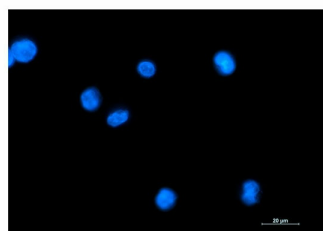
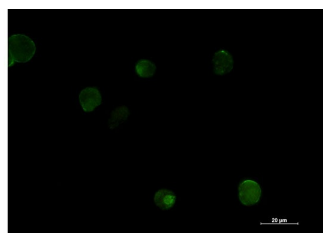
Product images:



Western blot detection of Extracellular matrix protein 1 in HeLa cell lysates using Extracellular matrix protein 1 Rabbit mAb(1:1000 diluted).Predicted band size:61kDa.Observed band size:61kDa.



Immunohistochemistry of Extracellular matrix protein 1 in paraffin-embedded Human tonsil using Extracellular matrix protein 1 Rabbit mAb at dilution 1/20



Immunocytochemistry analysis of Extracellular Matrix Protein 1 (green) in K562 using Extracellular Matrix Protein 1 antibody, and DAPI(blue).

