

## Product datasheet for **TA384127**

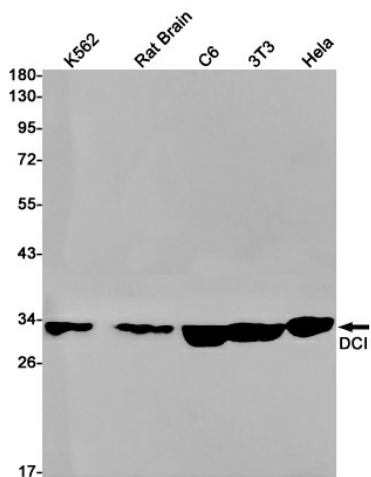
### DCI (ECI1) Rabbit Monoclonal Antibody [Clone ID: R05-2C8]

#### Product data:

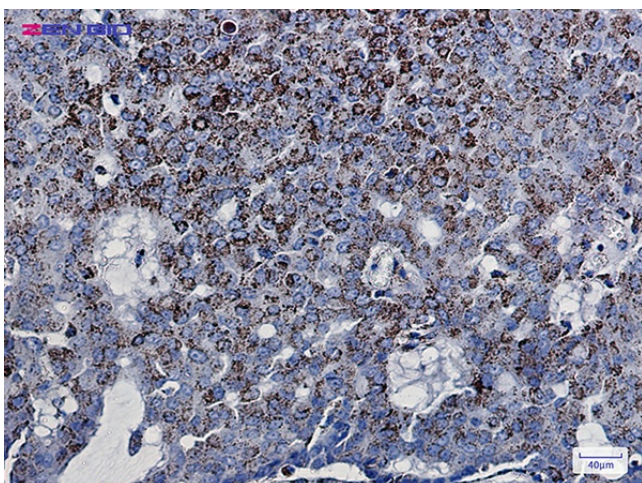
Product Type:	Primary Antibodies
Clone Name:	R05-2C8
Applications:	IF, IHC, WB
Recommended Dilution:	WB: 1/2000-1/10000 IHC: 1/20 ICC/IF: 1/20
Reactivity:	Human, Mouse, Rat
Host:	Rabbit
Isotype:	IgG
Clonality:	Monoclonal
Immunogen:	A synthetic peptide of human DCI
Formulation:	50mM Tris-Glycine(pH 7.4), 0.15M NaCl, 40% Glycerol, 0.01% Sodium azide and 0.05% BSA
Concentration:	lot specific
Purification:	Affinity Purified
Conjugation:	Unconjugated
Storage:	Store at 4°C short term. Aliquot and store at -20°C long term. Avoid freeze/thaw cycles.
Stability:	1 year
Predicted Protein Size:	Calculated MW: 33 kDa; Observed MW: 33 kDa
Gene Name:	enoyl-CoA delta isomerase 1
Database Link:	<a href="#">Entrez Gene 1632 Human P42126</a>
Background:	Swiss-Prot Acc.P42126.Able to isomerize both 3-cis and 3-trans double bonds into the 2-trans form in a range of enoyl-CoA species.
Synonyms:	Dci; eci



[View online »](#)

**Product images:**

Western blot detection of DCI in K562, Rat Brain, C6, 3T3, HeLa cell lysates using DCI Rabbit mAb (1:1000 diluted). Predicted band size: 33 kDa. Observed band size: 33 kDa.



Immunohistochemistry of DCI in paraffin-embedded Human breast cancer tissue using DCI Rabbit mAb at dilution 1/20