

## Product datasheet for **TA384123S**

### Dishevelled 2 (DVL2) Rabbit Monoclonal Antibody [Clone ID: R02-6I1]

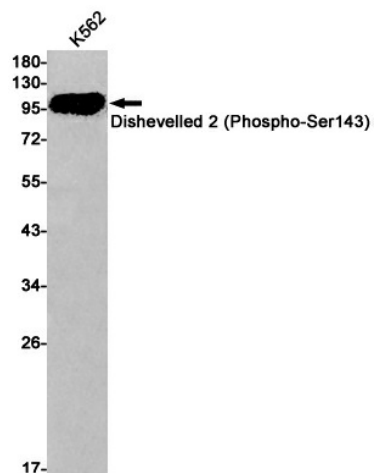
#### Product data:

Product Type:	Primary Antibodies
Clone Name:	R02-6I1
Applications:	WB
Recommended Dilution:	WB: 1/1000
Reactivity:	Human, Mouse
Host:	Rabbit
Isotype:	IgG
Clonality:	Monoclonal
Immunogen:	A synthetic phosphopeptide corresponding to residues surrounding Ser143 of human Dishevelled 2 (Phosphorylated)
Formulation:	50mM Tris-Glycine(pH 7.4), 0.15M NaCl, 40% Glycerol, 0.01% Sodium azide and 0.05% BSA
Concentration:	lot specific
Purification:	Affinity Purified
Conjugation:	Unconjugated
Storage:	Store at 4°C short term. Aliquot and store at -20°C long term. Avoid freeze/thaw cycles.
Stability:	1 year
Predicted Protein Size:	Calculated MW: 79 kDa; Observed MW: 90-95 kDa
Gene Name:	dishevelled segment polarity protein 2
Database Link:	<a href="#">Entrez Gene 1856 Human O14641</a>
Background:	Swiss-Prot Acc.O14641.Plays a role in the signal transduction pathways mediated by multiple Wnt genes. Participates both in canonical and non-canonical Wnt signaling by binding to the cytoplasmic C-terminus of frizzled family members and transducing the Wnt signal to downstream effectors. Promotes internalization and degradation of frizzled proteins upon Wnt signaling.
Synonyms:	Dishevelled-2



[View online »](#)

## Product images:



Western blot detection of Dishevelled 2 (Phospho-Ser143) in K562 cell lysates using Dishevelled 2 (Phospho-Ser143) Rabbit mAb(1:1000 diluted). Predicted band size: 79kDa. Observed band size: 90-95kDa.