

Product datasheet for **TA384122S**

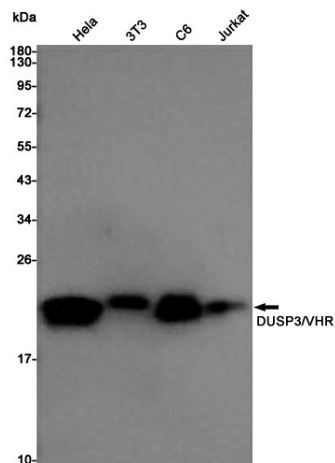
DUSP3 Rabbit Polyclonal Antibody

Product data:

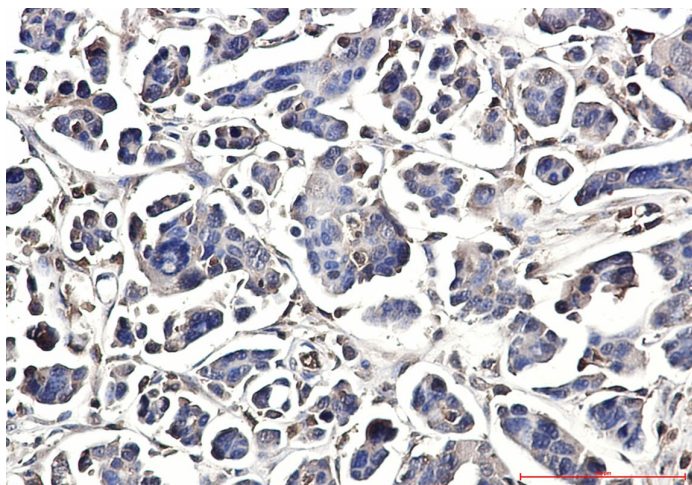
Product Type:	Primary Antibodies
Applications:	FC, IF, IHC, IP, WB
Recommended Dilution:	WB: 1/2000 IHC: 1/20-1/500 ICC/IF: 1/100 FC: 1/20 IP: 1/20
Reactivity:	Human, Mouse, Rat
Host:	Rabbit
Isotype:	IgG
Clonality:	Polyclonal
Immunogen:	A synthetic peptide of human DUSP3
Formulation:	50mM Tris-Glycine(pH 7.4), 0.15M NaCl, 40% Glycerol, 0.01% Sodium azide and 0.05% BSA
Concentration:	lot specific
Purification:	Affinity Purified
Conjugation:	Unconjugated
Storage:	Store at 4°C short term. Aliquot and store at -20°C long term. Avoid freeze/thaw cycles.
Stability:	1 year
Predicted Protein Size:	Calculated MW: 20 kDa; Observed MW: 20 kDa
Gene Name:	dual specificity phosphatase 3
Database Link:	Entrez Gene 1845 Human P51452
Background:	Swiss-Prot Acc.P51452.
Synonyms:	VHR



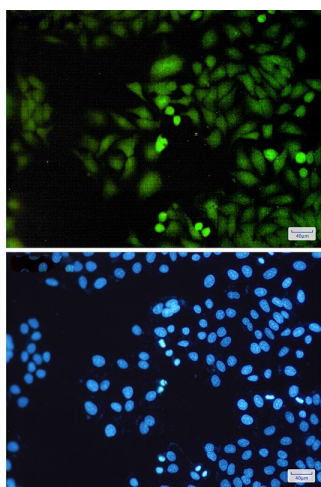
[View online »](#)

Product images:

Western blot analysis of DUSP3/VHR in HeLa, 3T3, C6, Jurkat lysates using DUSP3 antibody.



Immunohistochemistry analysis of paraffin-embedded Human Cholangiocarcinoma using DUSP3 antibody. High-pressure and temperature Sodium Citrate pH 6.0 was used for antigen retrieval.



Immunocytochemistry analysis of DUSP3(green) in HeLa using DUSP3 antibody, and DAPI(blue)