

Product datasheet for **TA384119S**

DPYD Rabbit Monoclonal Antibody [Clone ID: R02-7C8]

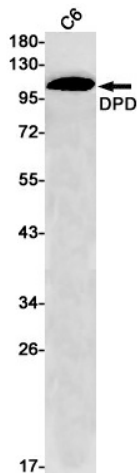
Product data:

Product Type:	Primary Antibodies
Clone Name:	R02-7C8
Applications:	IF, IHC, WB
Recommended Dilution:	WB: 1/1000 IHC: 1/50 ICC/IF: 1/50
Reactivity:	Human, Rat
Host:	Rabbit
Isotype:	IgG
Clonality:	Monoclonal
Immunogen:	A synthetic peptide of human DPD
Formulation:	50mM Tris-Glycine(pH 7.4), 0.15M NaCl, 40% Glycerol, 0.01% Sodium azide and 0.05% BSA
Concentration:	lot specific
Purification:	Affinity Purified
Conjugation:	Unconjugated
Storage:	Store at 4°C short term. Aliquot and store at -20°C long term. Avoid freeze/thaw cycles.
Stability:	1 year
Predicted Protein Size:	Calculated MW: 111 kDa; Observed MW: 111 kDa
Gene Name:	dihydropyrimidine dehydrogenase
Database Link:	Entrez Gene 1806 Human Q12882
Background:	Swiss-Prot Acc.Q12882.Involved in pyrimidine base degradation. Catalyzes the reduction of uracil and thymine. Also involved the degradation of the chemotherapeutic drug 5-fluorouracil.
Synonyms:	DHP; DHPDHASE; DPD; MGC70799; MGC132008

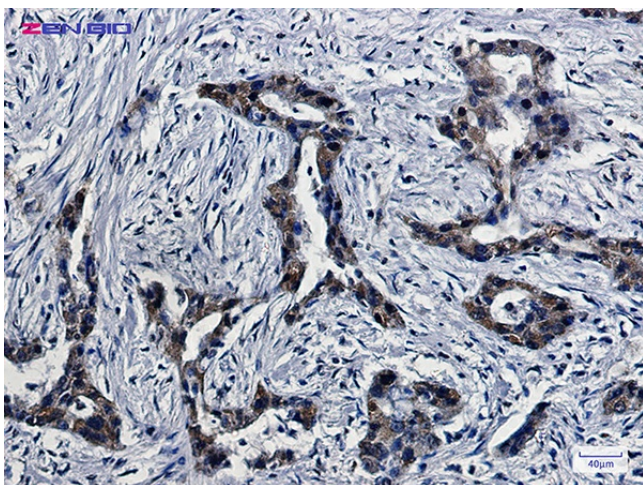


[View online »](#)

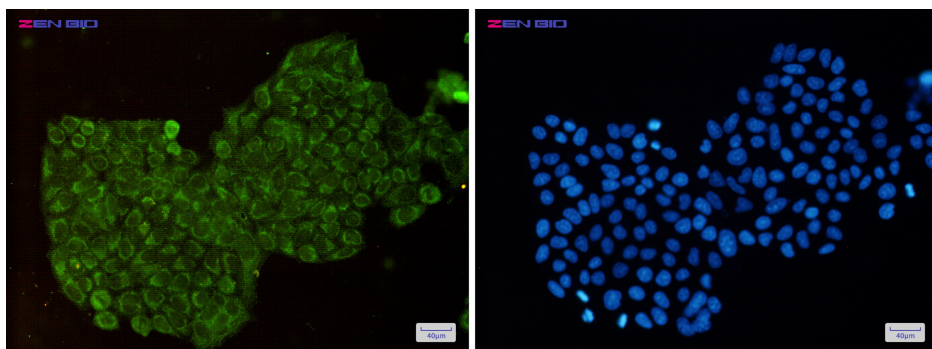
Product images:



Western blot analysis of DPD in C6 lysates using DPD antibody.



Immunohistochemistry of DPD in paraffin-embedded Human lung cancer tissue using DPD Rabbit mAb at dilution 1/5



Immunocytochemistry of DPD (green) in HeLa cells using DPD Rabbit mAb at dilution 1/50, and DAPI (blue)