

Product datasheet for **TA384113M**

DRP1 (DNM1L) Rabbit Polyclonal Antibody

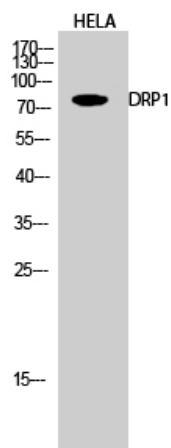
Product data:

| | |
|-------------------------|--|
| Product Type: | Primary Antibodies |
| Applications: | IHC, WB |
| Recommended Dilution: | WB: 1/500-1/2000 IHC: 1/100-1/300 |
| Reactivity: | Human, Mouse, Rat |
| Host: | Rabbit |
| Isotype: | IgG |
| Clonality: | Polyclonal |
| Immunogen: | KLH coupled human protein peptide 60-140 |
| Formulation: | Liquid in PBS containing 50% glycerol, 0.5% BSA and 0.02% sodium azide, pH 7.3. |
| Concentration: | lot specific |
| Purification: | Affinity Purified |
| Conjugation: | Unconjugated |
| Storage: | Store at 4°C short term. Aliquot and store at -20°C long term. Avoid freeze/thaw cycles. |
| Stability: | 1 year |
| Predicted Protein Size: | 80 kDa |
| Gene Name: | dynamin 1-like |
| Database Link: | Entrez Gene 10059 Human O00429 |
| Synonyms: | DLP1; DRP1; DVLP; DYMPLE; DYNIV-11; FLJ41912; HDYNIV; VPS1 |

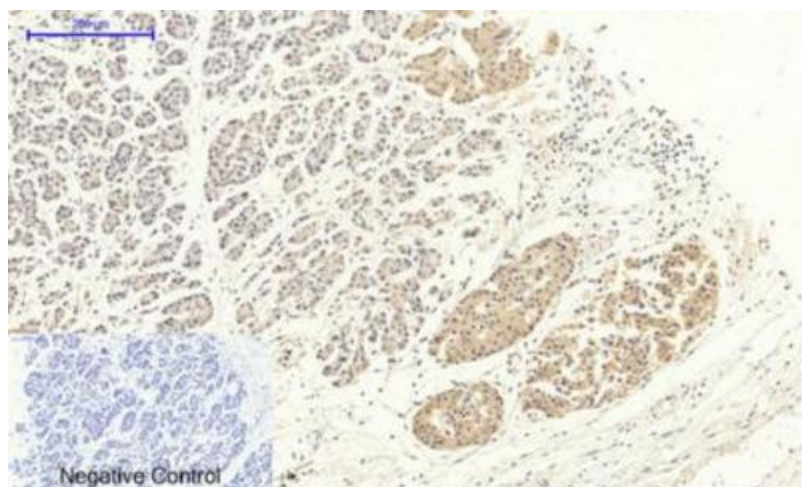


[View online »](#)

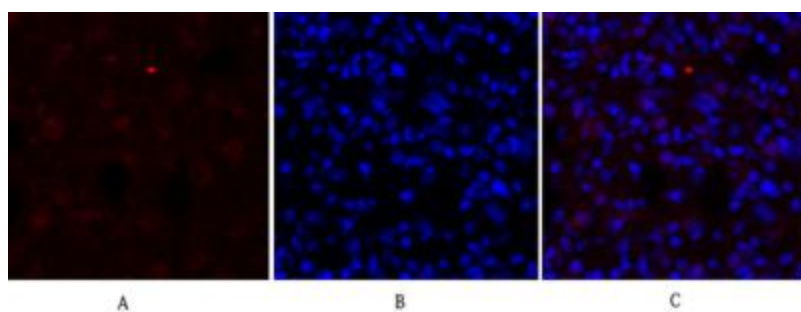
Product images:



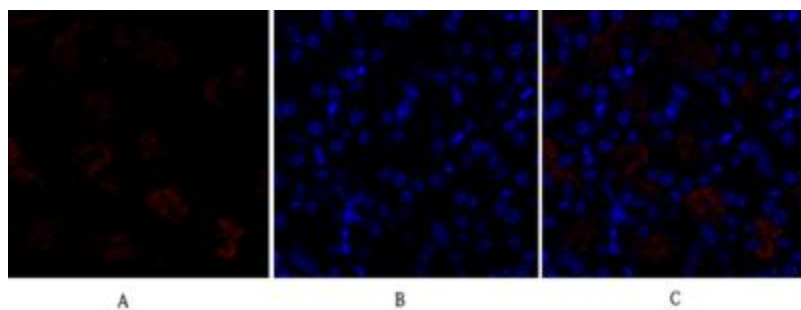
Western blot analysis of DRP1 in HeLa lysates using DRP1 antibody.



Immunohistochemistry analysis of paraffin-embedded Human stomach cancer using DRP1 antibody. High-pressure and temperature Sodium Citrate pH 6.0 was used for antigen retrieval. Negative control was used by secondary antibody only.



Immunofluorescence analysis of DRP1 in rat lung using DRP1 antibody(red),and DAPI (blue).



Immunofluorescence analysis of DRP1 in mouse kidney using DRP1 antibody(red),and DAPI (blue)