

## Product datasheet for **TA384113**

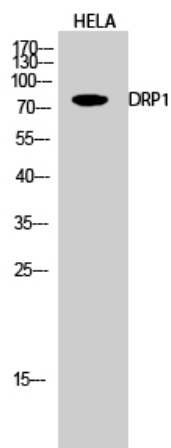
### DRP1 (DNM1L) Rabbit Polyclonal Antibody

#### Product data:

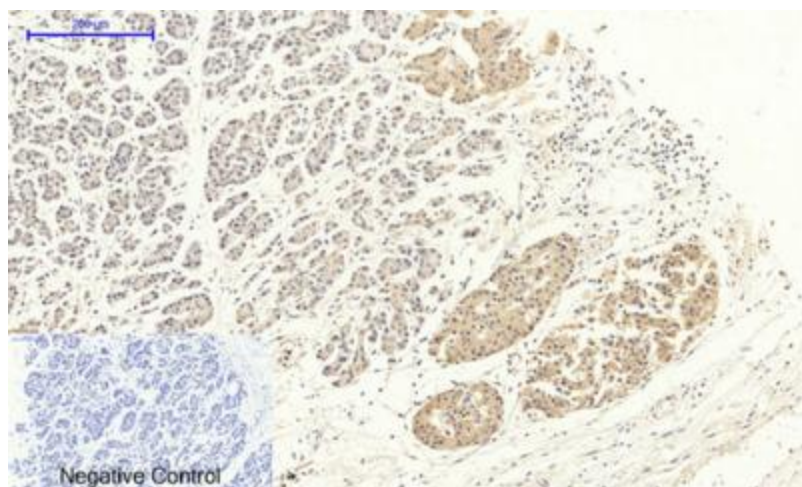
Product Type:	Primary Antibodies
Applications:	IHC, WB
Recommended Dilution:	WB: 1/500-1/2000 IHC: 1/100-1/300
Reactivity:	Human, Mouse, Rat
Host:	Rabbit
Isotype:	IgG
Clonality:	Polyclonal
Immunogen:	KLH coupled human protein peptide 60-140
Formulation:	Liquid in PBS containing 50% glycerol, 0.5% BSA and 0.02% sodium azide, pH 7.3.
Concentration:	lot specific
Purification:	Affinity Purified
Conjugation:	Unconjugated
Storage:	Store at 4°C short term. Aliquot and store at -20°C long term. Avoid freeze/thaw cycles.
Stability:	1 year
Predicted Protein Size:	80 kDa
Gene Name:	dynamin 1-like
Database Link:	<a href="#">Entrez Gene 10059 Human O00429</a>
Synonyms:	DLP1; DRP1; DVLP; DYMPLE; DYNIV-11; FLJ41912; HDYNIV; VPS1



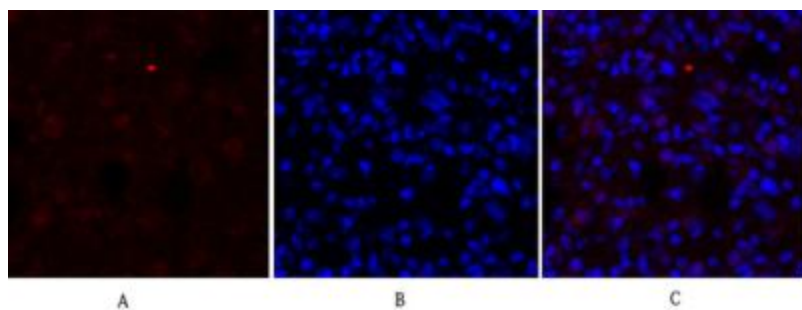
[View online »](#)

**Product images:**

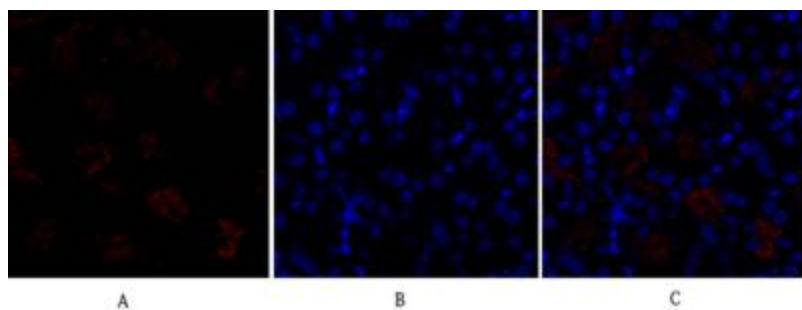
Western blot analysis of DRP1 in HeLa lysates using DRP1 antibody.



Immunohistochemistry analysis of paraffin-embedded Human stomach cancer using DRP1 antibody. High-pressure and temperature Sodium Citrate pH 6.0 was used for antigen retrieval. Negative control was used by secondary antibody only.



Immunofluorescence analysis of DRP1 in rat lung using DRP1 antibody(red),and DAPI (blue).



Immunofluorescence analysis of DRP1 in mouse kidney using DRP1 antibody(red),and DAPI (blue)