

Product datasheet for **TA384110S**

DLX4 Rabbit Monoclonal Antibody [Clone ID: R09-1C5]

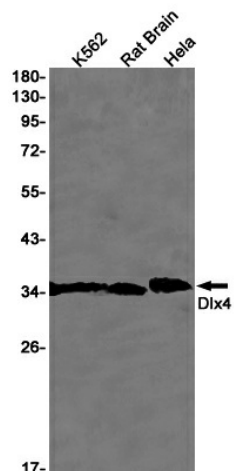
Product data:

Product Type:	Primary Antibodies
Clone Name:	R09-1C5
Applications:	IF, IP, WB
Recommended Dilution:	WB: 1/1000 ICC/IF: 1/20-1/100 IP: 1/20
Reactivity:	Human, Rat
Host:	Rabbit
Isotype:	IgG
Clonality:	Monoclonal
Immunogen:	A synthetic peptide of human Dlx4
Formulation:	50mM Tris-Glycine(pH 7.4), 0.15M NaCl, 40% Glycerol, 0.01% Sodium azide and 0.05% BSA
Concentration:	lot specific
Purification:	Affinity Purified
Conjugation:	Unconjugated
Storage:	Store at 4°C short term. Aliquot and store at -20°C long term. Avoid freeze/thaw cycles.
Stability:	1 year
Predicted Protein Size:	Calculated MW: 26 kDa; Observed MW: 35 kDa
Gene Name:	distal-less homeobox 4
Database Link:	Entrez Gene 1748 Human Q92988
Background:	Swiss-Prot Acc.Q92988.May play a role in determining the production of hemoglobin S. May act as a repressor. During embryonic development, plays a role in palatogenesis.
Synonyms:	BP1; DLX-7; DLX-8; DLX7; DLX8; DLX9

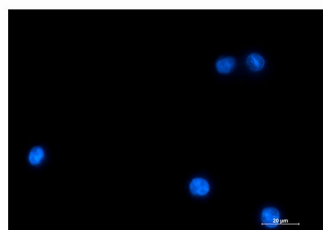


[View online »](#)

Product images:



Western blot detection of Dlx4 in K562, Rat Brain, HeLa cell lysates using Dlx4 Rabbit mAb(1:1000 diluted). Predicted band size: 26kDa. Observed band size: 35kDa.



Immunocytochemistry analysis of DLX4 (green) in K562 using DLX4 antibody, and DAPI (blue).