

## Product datasheet for **TA384108**

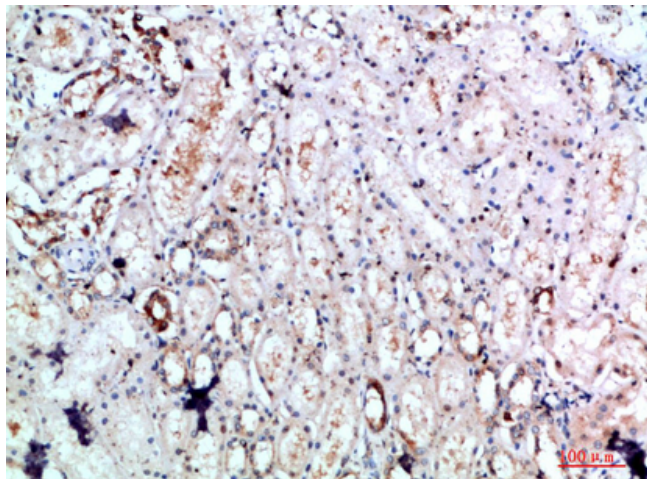
### DLEU7 Rabbit Polyclonal Antibody

#### Product data:

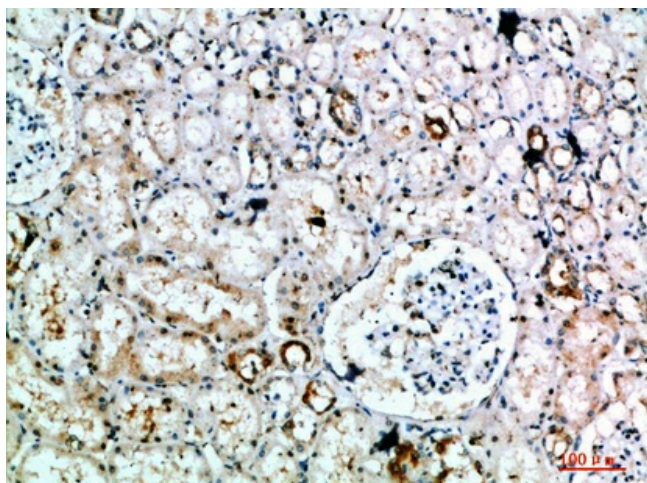
Product Type:	Primary Antibodies
Applications:	ELISA, IHC
Recommended Dilution:	IHC-p: 1/50-1/200
Reactivity:	Human
Host:	Rabbit
Isotype:	IgG
Clonality:	Polyclonal
Immunogen:	The antiserum was produced against synthesized peptide derived from the Internal region of human DLEU7. AA range:51-100
Formulation:	Liquid in PBS containing 50% glycerol, 0.5% BSA and 0.02% sodium azide, pH 7.3.
Concentration:	lot specific
Purification:	Affinity Purified
Conjugation:	Unconjugated
Storage:	Store at 4°C short term. Aliquot and store at -20°C long term. Avoid freeze/thaw cycles.
Stability:	1 year
Database Link:	<a href="#">Q6UYE1</a>
Background:	Swiss-Prot Acc.Q6UYE1.



[View online »](#)

**Product images:**

Immunohistochemistry analysis of paraffin-embedded Human kidney using DLEU7 antibody. High-pressure and temperature Sodium Citrate pH 6.0 was used for antigen retrieval.



Immunohistochemical analysis of paraffin-embedded Human tonsils using DLEU7 antibody. High-pressure and temperature Sodium Citrate pH 6.0 was used for antigen retrieval.