

## Product datasheet for **TA384104**

### DIABLO Rabbit Polyclonal Antibody

#### Product data:

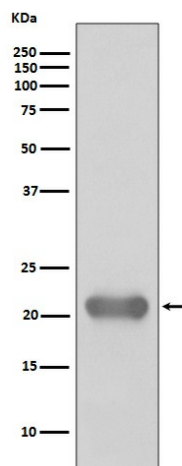
Product Type:	Primary Antibodies
Applications:	FC, IF, IHC, IP, WB
Recommended Dilution:	WB: 1/1000-1/5000 IHC: 1/50-1/200 ICC/IF: 1/100-1/500 IP: 1/50 FC: 1/50
Reactivity:	Human, Mouse, Rat
Host:	Rabbit
Isotype:	IgG
Clonality:	Polyclonal
Immunogen:	A synthesized peptide derived from human Smac/Diablo
Formulation:	Rabbit IgG in phosphate buffered saline , pH 7.4, 150mM NaCl, 0.02% sodium azide and 50% glycerol.
Concentration:	lot specific
Purification:	Affinity Chromatography
Conjugation:	Unconjugated
Storage:	Store at 4°C short term. Aliquot and store at -20°C long term. Avoid freeze/thaw cycles.
Stability:	1 year
Predicted Protein Size:	21kDa
Gene Name:	diablo IAP-binding mitochondrial protein
Database Link:	<a href="#">Entrez Gene 56616 Human Q9NR28</a>
Background:	Swiss-Prot Acc.Q9NR28.Smac/Diablo is a 21 kDa mammalian mitochondrial protein that functions as a regulatory component during apoptosis. Upon mitochondrial stress, Smac/Diablo is released from mitochondria and competes with caspases for binding of IAPs (inhibitor of apoptosis proteins). The interaction of Smac/Diablo with IAPs relieves the inhibitory effect of the IAPs on caspases.



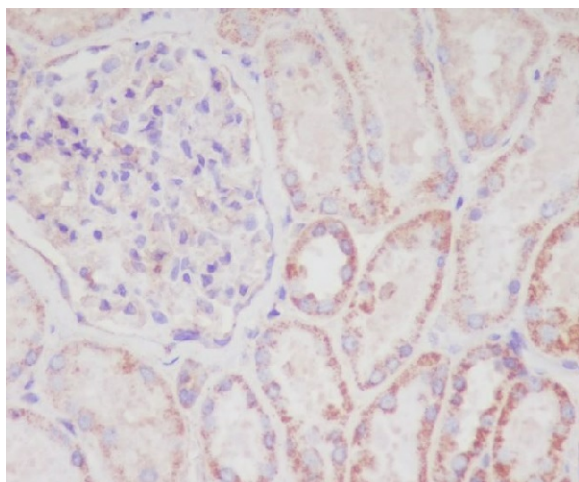
[View online »](#)

Synonyms: 0610041G12Rik; DIABLO-S; FLJ10537; FLJ25049; SMAC; SMAC3

### Product images:



Western blot analysis of Smac/Diablo in Jurkat lysates using SMAC antibody.



Immunohistochemistry analysis of paraffin-embedded Human kidney using Smac/Diablo antibody. High-pressure and temperature Sodium Citrate pH 6.0 was used for antigen retrieval.