

Product datasheet for **TA384089S**

DDIT3 Rabbit Polyclonal Antibody

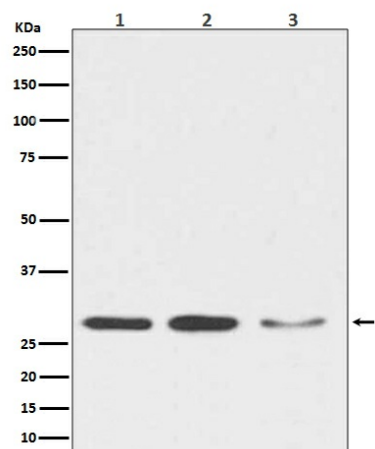
Product data:

Product Type:	Primary Antibodies
Applications:	FC, IHC, WB
Recommended Dilution:	WB: 1/500-1/2000 IHC: 1/50-1/200 FC: 1/50
Reactivity:	Human, Mouse, Rat
Host:	Rabbit
Isotype:	IgG
Clonality:	Polyclonal
Immunogen:	A synthesized peptide derived from human DDIT3
Formulation:	Rabbit IgG in phosphate buffered saline , pH 7.4, 150mM NaCl, 0.02% sodium azide and 50% glycerol.
Concentration:	lot specific
Purification:	Affinity Chromatography
Conjugation:	Unconjugated
Storage:	Store at 4°C short term. Aliquot and store at -20°C long term. Avoid freeze/thaw cycles.
Stability:	1 year
Predicted Protein Size:	27kDa
Gene Name:	DNA damage inducible transcript 3
Database Link:	Entrez Gene 1649 Human P35638
Background:	Swiss-Prot Acc.P35638.Inhibits the DNA-binding activity of C/EBP and LAP by forming heterodimers that cannot bind DNA.
Synonyms:	CEBPZ; CHOP; CHOP10; DDIT-3; GADD153; MGC4154



[View online »](#)

Product images:



Western blot analysis of DDIT3 expression in (1) HeLa cell lysate; (2) NIH/3T3 cell lysate; (3) C6 cell lysate.