

## Product datasheet for **TA384087**

### DDAH1 Rabbit Polyclonal Antibody

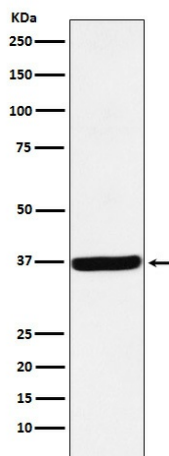
#### Product data:

Product Type:	Primary Antibodies
Applications:	FC, IF, IHC, IP, WB
Recommended Dilution:	WB: 1/1000-1/5000 IHC: 1/50-1/200 ICC/IF: 1/50-1/200 IP: 1/40 FC: 1/30
Reactivity:	Human, Mouse, Rat
Host:	Rabbit
Isotype:	IgG
Clonality:	Polyclonal
Immunogen:	A synthesized peptide derived from human DDAH1
Formulation:	Rabbit IgG in phosphate buffered saline , pH 7.4, 150mM NaCl, 0.02% sodium azide and 50% glycerol.
Concentration:	lot specific
Purification:	Affinity Chromatography
Conjugation:	Unconjugated
Storage:	Store at 4°C short term. Aliquot and store at -20°C long term. Avoid freeze/thaw cycles.
Stability:	1 year
Predicted Protein Size:	37kDa
Gene Name:	dimethylarginine dimethylaminohydrolase 1
Database Link:	<a href="#">Entrez Gene 23576 Human O94760</a>
Background:	Swiss-Prot Acc.O94760.Hydrolyzes N(G),N(G)-dimethyl-L-arginine (ADMA) and N(G)-monomethyl-L-arginine (MMA) which act as inhibitors of NOS. Has therefore a role in the regulation of nitric oxide generation.
Synonyms:	DDAH; DDAH-1; DDAHI; Dimethylargininase-1; FLJ21264; FLJ25539



[View online »](#)

## Product images:



Western blot analysis of DDAH1 in 293 lysates using DDAH1 antibody.