

## Product datasheet for **TA384083**

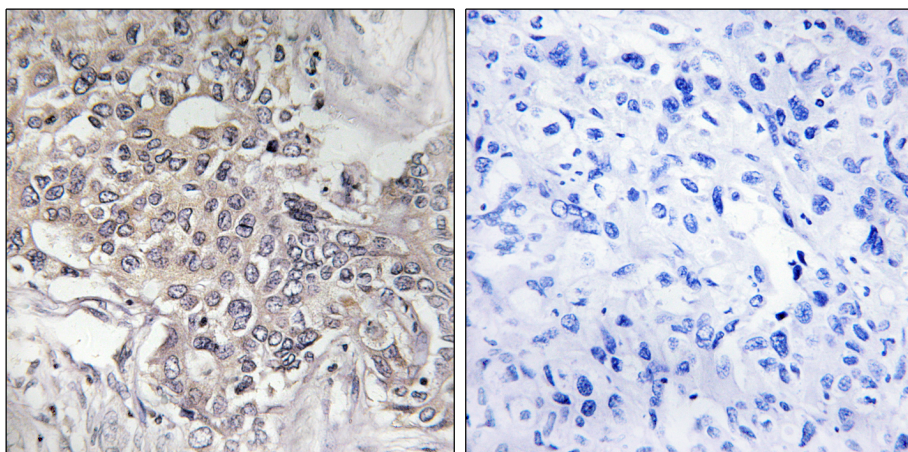
### CYP4Z1 Rabbit Polyclonal Antibody

#### Product data:

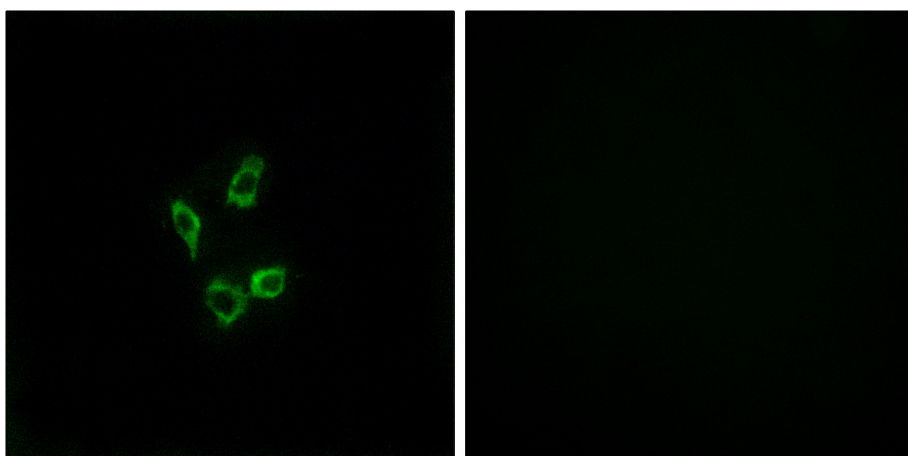
Product Type:	Primary Antibodies
Applications:	ELISA, IF, IHC
Recommended Dilution:	IHC: 1/100-1/300 IF: 1/200-1/1000 ELISA: 1/20000
Reactivity:	Human
Host:	Rabbit
Isotype:	IgG
Clonality:	Polyclonal
Immunogen:	The antiserum was produced against synthesized peptide derived from human Cytochrome P450 4Z1. AA range:71-120
Formulation:	Liquid in PBS containing 50% glycerol, 0.5% BSA and 0.02% sodium azide, pH 7.3.
Concentration:	lot specific
Purification:	Affinity Chromatography
Conjugation:	Unconjugated
Storage:	Store at 4°C short term. Aliquot and store at -20°C long term. Avoid freeze/thaw cycles.
Stability:	1 year
Database Link:	<a href="#">Q86W10</a>
Background:	Swiss-Prot Acc.Q86W10.



[View online »](#)

**Product images:**

Immunohistochemical analysis of paraffin-embedded Human tonsils using Cytochrome P450 4Z1 antibody. Sample with blocking peptide on the right. High-pressure and temperature Sodium Citrate pH 6.0 was used for antigen retrieval.



Immunofluorescence analysis of Cytochrome P450 4Z1 in HUVEC cells using Cytochrome P450 4Z1 antibody. Sample with blocking peptide on the right.